

WHAT'S *Happening!*

in Boone County, Kentucky



Fall/Winter 2018/19

November General Election

The General Election is scheduled for November 6. The last day to register to vote in this election is October 9. The deadline to change your party affiliation and vote in your new party's 2019 primary is December 31. **You can register to vote, change your party affiliation or update your address by visiting www.booneclerk.com.**

Become an Election Day poll worker

Precinct Election Day poll workers are an extremely important part of every election. The Boone County Board of Elections is always looking for registered voters that are interested in working as a precinct officer on Election Day. For details please call the Voter Registration Department at 859/334-2130.

Boone County gets an additional Family Court Judge

On April 2 Governor Matt Bevin signed House Bill 348 into law. The new law created an additional Family Court Judge for Boone County's 54th Judicial Circuit. This new position will help expedite Boone County's increasing case load. The new Family Court Judge position will be up for election on the November 6 ballot.



Boone County Clerk



Kenny Brown
Boone County Clerk

Burlington Office: Boone Co. Admin. Bldg.
2950 Washington St., Burlington, KY 41005
PH: 859/334-2108

Branch Office: Florence City Building
8100 Ewing Blvd., Florence, KY 41042
PH: 859/647-8702

www.booneclerk.com

In this issue:

BC Alliance: 14
BC Clerk: 1
BC Conservation District: 10
BC Cooperative Extension: 18

BC Fiscal Court: 2-3, 20
BC Parks & Recreation: 20
BC Public Library: 19
BC Schools: 13

BC Solid Waste Mgmt.: 12
BC Success By 6: 11
City of Florence: 5-7
City of Union: 8

NKY Health Department: 15
St. Elizabeth Healthcare: 16-17
Sanitation District 1: 4
TANK: 9

From the desk of Gary W. Moore, Boone County Judge/Executive

Boone County adopts Fiscal Year 2019 budget



“The Capital Improvement budget demonstrates an understanding that “success does not succeed itself” without proper planning, investment, and the commitment to continuously compete for new businesses and residents into the future. I believe our budget makes these types of commitments and positions the county for continuing success.”

Gary W. Moore
Boone County Judge/Executive

The Boone County Fiscal Court, at its June 26 meeting, took one of its most important votes and unanimously enacted the operating and capital budgets for the 2019 Fiscal Year. This budget will guide and shape the service delivery program and capital project list for the next year. I believe this document represents one of the County's very best budgets in many years and will advance a number of important projects and meet citizen expectations regarding services and quality of life standards.

Our local economy mirrors a healthy national economy and enjoys many of the same characteristics including positive revenue growth, low unemployment rates, private sector capital investment and job creation. These conditions enable the County to maintain and/or reduce already low tax rates, invest in needed infrastructure projects and deliver the services our residents desire. Additional positive features of the budget include declining debt levels, a “pay-as-you-go” approach to highway and sidewalk projects and success in securing state and federal grant funds to reduce the commi-

ment of local resources. Finally, our reserve funds, resources available to address emergencies and other unforeseen conditions, exceed our self-imposed high levels and protect our strong bond rating (AA1).

Our budget is made up of 14 separate funds and totals \$157,518,215 for FY 2019. A number of these funds however represent resources that must be spent on specific services as required by state and federal law, and as such, the County's role is primarily a fiduciary one. The main funds that support daily County services include total budget appropriations, without reserves, of \$61,208,258, an increase of 4.83% from FY 2018. Another fund, the Capital Improvement Fund, reflects current and multi-year projects such as new county roads, sidewalks, park improvements, facility improvements and other special projects. By necessity, this fund includes many projects for next year that will address current needs and continue to position the county for orderly economic growth and community development.

Revenue continues to grow as well and provides resources to accomplish the goals and priorities

of the elected body. Revenue from payroll taxes (applied on all jobs) is by far the single largest category and represents about 53% of the General Fund budget. Job growth and business expansion enables the county to maintain real estate and property tax rates at a very low level, some of the lowest within the Northern Kentucky region. To illustrate this fact, total real estate tax revenue for the entire county for FY 2019 is forecasted at 11.0 million dollars while total revenue from payroll taxes is forecasted at 26.4 million dollars. The county will institute a new 911 dwelling unit fee of \$75 per dwelling unit per year, to fund critical public safety emergency communication system service. Before levying this fee the fiscal court, last year, voted to eliminate the 911 land line fee (\$2.78/line/month), and reduced several tax rates applied to real estate, personal property and motor vehicles to minimize the impact of this new fee.

The Capital Improvement budget contains funds to complete a wide array of projects including county road upgrades, various sidewalk and pedestrian path expansions, streetscape improvements, a new

neighborhood park, building security enhancements at county buildings, and capital maintenance work at county buildings and park facilities. In addition, a very aggressive pavement resurfacing and improvement program is planned to raise the level and condition of the driving surface of many county roads and subdivision streets. Finally, while many higher profile projects are planned, the budget includes funds for more basic needs including items such as park shelter improvements, road slide repairs and the removal of dead Ash trees at our parks and Golf Courses. And speaking of golf courses, the FY 2019 budget authorizes the reinvestment in and renovation of the Boone Links Golf Course. Planned improvements consist of a larger banquet facility, clubhouse upgrades, golf cart path rehabilitation and some new amenities that should ensure the long-term viability of our courses.

There is truly much to be thankful for and celebrate regarding the FY 2019 budget. A review of line-item expenditures would affirm that the fiscal court focuses first and foremost on priorities important to our citizens such as public safety, clean neighborhoods, efficient snow removal, animal control/care, quality parks and related public services. The Capital Improvement budget demonstrates an understanding that “success does not succeed itself” without proper planning, investment, and the commitment to continuously compete for new businesses and residents into the future. I believe our budget makes these types of commitments and positions the county for continuing success.

While there are many positive aspects of the FY 2019 budget, it is

Boone County Fiscal Court

BOONE COUNTY ADOPTS FISCAL YEAR 2019 BUDGET, *cont.*

not without its challenges and issues that will require careful monitoring analysis. The budget includes a 12% increase in annual pension contributions for our workforce that will continue each year for the next four years. Furthermore, state courts have invalidated some provisions of the pension reform legislation that could have an impact on all local governments. Our jail inmate population numbers continue to grow and

at some point may require additional bed capacity to address future needs for this public safety facility. Finally, coordinating and timing the completion of infrastructure projects that dovetail with continuing growth and development is always a delicate balance that requires focus and sound planning.

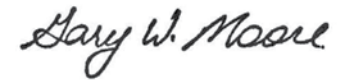
All things considered, I am truly excited about the adoption of the new budget and all that it contains

to move our county forward. I would like to thank our county commissioners for their work, leadership and support of this budget; arguably the single most important document that the county elected body considers during the course of the year.

In closing, all of the county's finances are available for review on our website at www.boonecountyky.org where you can monitor and track individual expenses and overall

budget performance and activity. I hope you will take advantage of this tool and stay engaged regarding our performance with your tax dollars. You are the stockholder of this company called Boone County and it is privilege to represent you!

Sincerely,



Enjoy golf in Boone County!



 **#1 public course in Kentucky — 2016, 2017**

18 Holes with Cart
\$47 + Tax



Bring *What's Happening!* for Discount
Expires 12-1-18
Valid for foursome

LASSING POINTE
859/384-2266
2266 Double Eagle Dr.
Union Ky. 41091

Clubhouse construction begins this October!



18 Holes with Cart
\$40 + Tax



Bring *What's Happening!* for Discount
Expires 12-1-18
Valid for foursome

Boone Links
859/371-7550
19 Clubhouse Dr.
Florence Ky. 41042

EMPLOYEE SPOTLIGHT: Sandy Gamble



Sandy Gamble has been with the Boone County Assisted Housing Department since December of 2000. Her previous experience as a property manager has proven to be beneficial in her current position as Quality Control Coordinator. Sandy has attended many special-

ized housing classes which enable her to oversee the process from intake to termination of assistance. Her expertise allows her to perform the day to day operations in a professional manner while helping clients with their housing needs. Sandy is an asset to the department and has contributed to the successful rating of High Performer for the department for many years. She continually maintains her support for the clients we assist in Boone County.

Sandy is married and has three children. When she is not busy at work, she enjoys spending time camping and boating at the lake with her family.

Boone County Fiscal Court

2950 Washington St.
P.O. Box 900
Burlington, KY 41005-0900
phone: 859/334-2100
fax: 859/334-3105



Boone County Fiscal Court

Gary W. Moore, Judge/Executive
Cathy Flaig, Commissioner
Dr. Charlie Kenner, Commissioner
Charlie Walton, Commissioner

SD1 reduces storm water service area

Removes about 1,500 properties

Sanitation District No. 1 is tightening up its storm water service area to better serve customers across Northern Kentucky.

The adjustment, which was approved by the Kentucky Division of Water earlier this year, shrinks the boundary by about 16 percent. It took effect July 1.

The change follows months of review by a working group of the SD1 Board of Directors and staff to ensure that SD1's storm water program is as effective and efficient as possible.

The SD1 Board made several recommendations to improve the storm water program, including re-focusing services on the more urbanized areas of Northern Kentucky rather than relying on watershed boundaries that the original program was modeled on.

The new boundary excludes some of the more rural areas that require limited service and focuses instead on more urbanized areas that have a larger concentration of hard surfaces like driveways, rooftops and parking lots.

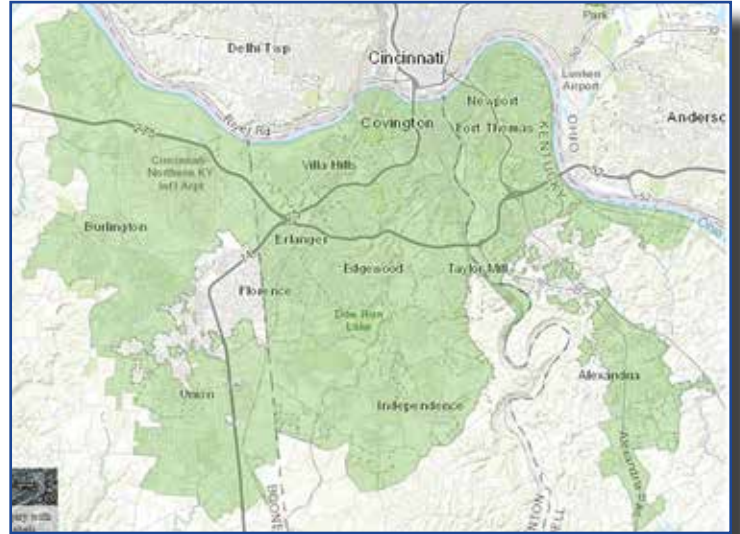
These impervious surfaces create more storm water runoff for SD1 to manage. If not managed properly, the risk increases for problems like flooding, erosion and pollution of the local waterways we rely on for drinking water and recreation.

These areas are also typically more densely populated and contain public infrastructure like public roadways and other storm water and sanitary sewer structures.

SD1 looked at several criteria when determining which properties would remain in its storm water service area and which would be removed.

An interactive map of the new SD1 storm water service area is available on SD1's website (www.sd1.org).

The criteria considered included whether a property is located within a Designated Urbanized Area according to the US Census, whether it is located within one of SD1's co-permittee cities that share responsibility with SD1 for meeting the federally regulated storm



water management requirements for Northern Kentucky, and whether it is located near existing SD1 sanitary or storm water infrastructure.

These criteria eliminated about 1,500 properties from the SD1 storm water service area and added about 25. SD1 has contacted all customers who

were removed from or added to the service area.

If you have any questions about the new SD1 storm water service boundary or SD1's storm water service program, contact SD1's Customer Care department at 859/578-7450 Monday through Friday, 8 am-4:30 pm, or email info@sd1.org.

Lower your SD1 bill by conserving water this winter

Did you know that your monthly SD1 sanitary sewer charge is based on how much water you use during the winter months?

Every time water goes down the drains in your home, that wastewater is added to SD1's sanitary sewer system, where it can be safely transported to a treatment plant, thoroughly cleaned and emptied into the Ohio River without hurting the environment or making people sick.

SD1 manages about 1,600 miles of sanitary sewer pipeline, along with six package treatment plants, three major treatment plants and 124 wastewater pumping stations. (This doesn't even count the 430 miles of storm sewer system, 32,000 storm sewer structures and 15 flood pump stations SD1 maintains as part of its storm water management services.)

To help maintain all that critical infrastructure, residential SD1 customers pay \$8.11 for every 100 cubic feet (1 HCF) of wastewater they produce.

But to help ensure that customers are only billed for the water that goes down their drains, and not for water used in outdoor activities such as landscaping, filling swimming pools or washing cars, SD1 uses a "winter factor."

Each customer's winter factor is calculated for the whole year based on water usage generally between October and April. Customers see their new winter factor applied beginning with their May bill. (This should not be confused with any rate increases, which are first reflected on August bills.)

So choosing to conserve water during the winter months can reduce your winter factor and result in lower SD1 sanitary sewer charges all year long.

Tips for saving money by conserving water

- Upgrade to WaterSense-labeled toilets, aerators and faucets
- Regularly check toilets for leaks
- Replace shower heads with a water-efficient model, and take shorter showers
- Turn off taps when brushing teeth
- Use just one glass or water bottle each day
- Upgrade to high-efficiency, Energy Star appliances that offer cycle and load-size adjustments
- Run washing machines and dishwashers only when they are full

SD1



1045 Eaton Drive
Fort Wright, KY 41017
phone: 859/578-7450
Hours of Operation:
Monday-Friday, 8 am - 4:30 pm



FALL/WINTER 2018 EVENTS

For more information about any of these programs, call the number listed or visit the City's Activity Guide at www.florence-ky.gov.

ONGOING PROGRAMS



SUPPORT THE RENEGADES Ongoing

Through the Americans Supporting Americans organization, the City of Florence, Kentucky, adopted Bravo "Renegade" Company, 2nd Battalion, 502nd Infantry Regiment, 2nd Brigade Combat Team, 101st Airborne Division (Air Assault) approximately 10 years ago. The Florence community continues to support the Renegades through Operation Enduring Freedom and Operation Iraqi Freedom. The Renegades attend multiple functions in Florence including Veterans Day and the Honor Run. If you would like to make a monetary donation to support the Renegade trip to Florence for the Veterans Day event in November, please go to the ['Support the Renegades' facebook page](#) and click on the 'Donate' button. Donations are accepted all year long at the Florence Government Center or on our website through paypal at www.florence-ky.gov. Your donations support their attendance at City functions as well as mailings to the troops when they are deployed.



CITY AUCTIONS Ongoing

All City of Florence Auctions are now held online. As they are scheduled, information will be available on the City website www.florence-ky.gov. They will also be advertised in the *Boone County Recorder*. Be sure you check the website regularly for information on all City events.



WORLD OF GOLF All Year Round

The World of Golf is located at 7400 Woodpoint Drive and features an 18-hole course, FootGolf, clubhouse with concession area, simulator, swing analyzer, indoor driving range, indoor putting green, miniature golf course, outdoor driving range, pro shop and more. Attention Florence Residents: On Monday evenings it's "Florence Resident Night" — \$1 discount on golf, driving range, and miniature golf; free golf clinic. Open Sunday-Saturday 8 am-9 pm all year round, it's the perfect place to practice, play, and learn. Call 371-8255 or go to www.landrumgolf.com.



POOCH FESTIVAL Saturday, September 8

Bring your four-legged best friend for a day of competition, fun and social interaction to the City's Annual Pooch Fest. The event will take place at the Florence Senior Activity Center with registration at 10 am and the competition at 10:30 am. Activities include an obstacle course, tricks, owner look-a-like, Best in Parade and Best in Show with treats and prizes for all. Businesses can rent space for \$15 and share information on pet-related nutrition, health, grooming, fitness, obedience, boarding, etc. Registration fee is \$5 per dog. Volunteers welcome to assist. Call 859/647-5439 for details. **Canine requirements:**

- Current licenses
- Owner must provide pooper scoopers
- Be in good health
- Kept on a leash



SAFE SITTER (BABYSITTING) CLASS Saturday, September 8

During this session, students ages 11 – 15 have an opportunity to develop leadership skills, work with younger children and care for infants. The Safe Sitter curriculum, a 6-hour class, teaches infant rescue breathing and choking, child care essentials, behavior management and babysitting as a business. Students will not become certified in first aid or CPR after completing this course but will be better prepared as a Safe Sitter. Fee is \$40 per student for training supplies and snacks. Students must bring a sack lunch and drink. Classes are limited and are held at the Florence Government Center from 9 am until 4 pm. Call 859/ 647-5439 for details. Download the registration form from the City's web page at www.florence-ky.gov and return to 859/647-5438 or Florence Government Center at 8100 Ewing Boulevard, Florence, KY 41042.



NEIGHBORHOOD NIGHT OUT Tuesday, September 11, 5-7 pm

We will gather at the new Florence Community Plaza on Mall Road and pay tribute to the public servants who made the ultimate sacrifice as well as those who worked tirelessly following the events that shook our nation on 9-11-01. We will dedicate the Plaza to all who work in Public Service and unveil bronze statues representing members of our Police Department, Fire/EMS Department and our Public Services Department at work as they serve our community. Commemorative bricks with the names of those who have retired from those departments will be placed by the statues.

The City greatly appreciates this very generous donation of property located on Mall Road. The donor specified that it be developed as a public space and had approval of the final design. This donation has allowed the City an opportunity to recognize those that keep our city safe and our infrastructure operating. Funds for completion of the Park were made possible, in part, from the proceeds of the sale of city property to the Northern Kentucky District Health Department for the construction of their new Ewing Boulevard office.

Food and drinks will be provided, and representatives from our city departments as well as elected officials will be on hand.

We must never forget what transpired that day in September of 2001. This park serves as a small reminder to say thank you to all who work in Public Service.



ARBOR DAY Saturday, September 22

The 2018 City of Florence Arbor Day Celebration will be held at Orleans Park located at 8449 St. Louis Blvd, Union, KY. This year's event will begin at 10 am and run through 12 Noon with lunch provided for participants. The program will include a brief history of Arbor Day and reading of the City's Arbor Day Proclamation, followed by various tree planting activities.

The National Arbor Day Foundation named the City of Florence "Tree City USA" for the 26th consecutive year in October 2017. The City has met all requirements for this distinction.

This event is open to the public so friends, family and neighborhoods are all welcome to attend. For additional information, contact the City of Florence Public Services Department at 859/647-5416.



ANNUAL LEAF COLLECTION October – December

A sign will be placed at the subdivision/street entrance the day prior to leaf collection.

The Florence Public Services Department performs their annual Leaf Collection Program from mid-October to mid-December for City of Florence residents. Leaves are treated and used as compost or fertilizer. Guidelines for collection are:

1. Rake leaves in a row behind the curb. Do not rake into the street. Leaves need to be raked to the curb by 7 am the morning of the scheduled pick-up.
2. Pick-up is on residential streets only. No state routes or commercial streets.
3. Keep all debris and trash out of the leaf row. This includes tree branches.
4. All leaves will be composted. To receive one or more loads of compost call 859/647-5416.
5. Homeowners may also bag leaves for pick-up by Rumpke.
6. The schedule is based upon weather and equipment operation.



FALL CLEANUP PROGRAM Monday, October 15 – Sunday, October 21

The Florence Public Services Department will offer its annual Fall Cleanup Program to residents during the week of October 15 through Sunday, October 21. The program is an opportunity for Florence residents to bring unwanted debris to the Public Services Maintenance Facility located at 7850 Tanners Lane for disposal. Debris that will not be accepted includes tires, paint (in liquid form), batteries, antifreeze, oil, insecticides, pesticides and fungicides (hazardous waste). Proof of residency required. Facility hours are 7 am - 7 pm Monday through Friday and 9 am - 7 pm Saturday and Sunday. Call 859/647-5416 for details.



HALLOWEEN NIGHT OUT Tuesday, October 30

Join us for a howling good time at our annual Halloween Night Out! Bring the children for an entertaining evening of tricks and treats with City staff, local organizations and businesses. The fun will begin at 5 pm and run through 7 pm at the Florence Government Center. Toddlers and children up to age 12 can enjoy treats, games, mascots, spooky stations, a magician, a storyteller and a hayride. The program is FREE and will be held (under tents) rain or shine. For sponsorship opportunities or to register as a Spooky Station call 859/647-5439 or download the form from www.florence-ky.gov.



HOUSEHOLD HAZARDOUS WASTE COLLECTION Saturday, November 3

Leftover household products that contain corrosive, toxic, ignitable or reactive ingredients are considered to be household hazardous waste (HHW). HHW is the group of chemicals and other substances that are commonly found in many homes, but require special attention when being discarded. You may discard your hazardous waste on Saturday, November 3 at the U.C. Health Stadium (home of Florence Freedom). For more information go to www.nkyhhw.org.



VETERANS DAY Sunday, November 11

Join the City as we honor Veterans of all wars during our annual Veterans Day Program on Sunday, November 11. The ceremony will begin at 2 pm at the Florence Government Center. The event will feature a speaker, music from the Florence Community Band & Chorus and recognition of local Veteran's. Call 859/647-5439 for more information.



2018 HONOR RUN HALF MARATHON Sunday, November 11

The St. Elizabeth Healthcare Honor Run Half Marathon, Honor Run 2 Person Relay, Nature Nate's Honor Run Half Marathon 5K and Honor Run Kids One Mile will be held Nov 11. All events start and finish under the Florence Y'All Water Tower at Florence Mall. You can find race times, details and registration information at www.honorrunchalf.com. Proceeds from all events will benefit Honor Flight Tri-State who sends veterans to Washington DC to visit their memorials and Habitat for Humanity to support local Veteran's home repair.



COMMUNITY TREE LIGHTING Tuesday, December 4

Bring your family as we kick off the Holiday season at our Community Tree Lighting! This year's event will be held at the Florence Community Plaza, 8001 Mall Road. Join us from 6 - 8 pm as we light the Christmas tree and enjoy holiday tunes with the Florence Community Band and Chorus and of course, we will welcome Santa Claus. Civic organizations and local businesses will provide holiday activities such as face painting, balloon artists, musical entertainment and refreshments while the children await their visit with Santa. The program is FREE and held (under a tent) rain or shine. Call 859/647-5439 for details.



CHRISTMAS TREE PICK UP RECYCLING Wednesday, January 2

Wondering what to do with your tree after the holidays? Set it on the curbside for pick-up on January 2, 2019, no later than 7 am. If you miss that day, bring your tree to Stringtown Park (one block west of Boone County High School) for mulching on Saturday, January 5, 2019 before 10 am. Mulch is available to residents at no charge by calling Kelly Chapman, Boone County Solid Waste at 859/334-3151. Trees are collected via the snow routes. Call 859/647-5416 for details



DR. MARTIN LUTHER KING JR. DISPLAY Monday, January 21

The City of Florence celebrates the birthday of Dr. Martin Luther King Jr. and acknowledges his accomplishments as a civil rights leader and social activist with a display located in the lobby of the Florence Government Center. The display is open to visitors during office hours on January 21. Call 859/647-5439 for more information.



FLORENCE FAMILY AQUATIC CENTER

Discount available Friday, November 23-Tuesday, April 30

Take advantage of the 15% discount on all Aquatic Center memberships effective the day after Thanksgiving, Friday, November 23 until Tuesday, April 30, 2019. Call 859/647-4619 for more information.

Meet your Mayor and Commissioners



Mayor Larry Solomon

Mayor Larry Solomon has served as Mayor for the City of Union since January 1, 2015.

Solomon became interested in local government when he served as the president of the Hampshire Home Owners Association.

He began attending City meetings after his election to the HOA, to see how city decisions impacted neighborhood development. After about two years of attending meetings, he felt that he had a better understanding of what the community was looking for from its elected officials and wanted to see how he could serve the City as a whole. With the encouragement of Bryan Miller, he then decided to run for mayor and won the election in 2014.

Solomon was raised in Northeast Ohio, near Columbus. He attended Kent State (Ohio), earning a bachelor's degree in political science. Solomon served in the Naval reserves for a couple of years after college, then returned to school, graduating from Ohio State University with a master's degree in public administration and business administration.

Solomon began his career in marketing at Kimberly Clark, then went on to work at P&G a few years later. Solomon eventually left P&G for the opportunity to start the marketing research team at Valvoline Oil.

After 23 years at Valvoline and many projects later, Solomon retired in 2006.

Solomon is proud of the progress that is being made in the City during his time as Mayor so far. Several projects he

noted are the new Kroger store, growth of several new business enterprises in the City, and the major improvements for Mt. Zion Road.

Solomon has been married to his wife, and best friend, Judy for 41 years and they have a daughter together named Jamie.



Bryan Miller

Commissioner Bryan Miller is the longest-tenured commissioner, serving since 2010.

Miller was previously public works commissioner for two years before becoming the commissioner of finance in 2015.

Miller grew up in a small town in western Pennsylvania called Five Points. After graduating, he went on to serve stateside in the United States Army during the Vietnam War.

He moved to Akron, Ohio after being offered a lab technician position at Goodyear Tire and Rubber. He graduated from the University of Akron with an associate's degree in chemical technology and a bachelor's degree in chemistry with a minor in math.

Miller worked in the plastics industry for over 30 years, first with Goodyear in their plastics division and then at Continental PET Technologies, a plastic manufacturer, as a Vice President of Quality Control over 21 plastic container manufacturing facilities.

He has been a Union resident for over 20 years. Miller and his wife, Terri, enjoy traveling, and he hopes, someday, to travel to Scandinavia.



Jeremy Ramage

Commissioner Jeremy Ramage didn't set out to be a politician.

In 2013, residents asked him about running for city commissioner. Mr. Ramage chose to move to Union in 2007 from Fishers, Ind. to raise his family because of the exceptional school system, safe neighborhoods and proximity to so many amenities which NKY and Cincinnati have to offer.

When asked about becoming a city commissioner, he thought one of his best contributions would be to represent what Union "wants to be."

Growing up in a military family and graduating from the USMA at West Point meant that Mr. Ramage moved often, and has seen a lot of the world. He felt that this would allow him to provide a unique insight. In addition, he wants to foster growth in the City of Union in a manner that will continue to bring new residents to Union for the very same reasons he moved here.

Mr. Ramage currently works for Matheson Tri-Gas out of the Carrollton, KY plant, selling industrial gases, services and equipment. His wife Gina, is an educator at Union Pointe Academy. They have two children, Mason and Tanner, who are recent graduates of Larry A. Ryle High School and will be attending UK and UC this fall.



John Mefford

Commissioner John Mefford has lived in Union for more than 20 years, and has served twice on the

City Commission. He first served in 2006, filling an unexpired term, and has been elected four times since, starting in 2010.

Mefford is well-known in the community, having served as an honors chemistry instructor at Ryle High School since 2005.

Prior to his time in teaching, Mefford had a career as a chemist, work-

ing at both Michelman, Inc. in Cincinnati and at Franklynn Industries in Loveland, where he was a Senior Discovery Chemist. He felt the desire to help others learn and received a master's in teaching from Northern Kentucky in 2006. He also holds a bachelor's of chemistry from NKU and a master's in chemistry from Cincinnati as well.

Mefford is active in the community and is a member of several committees and groups both at Ryle and in the Union area. He currently serves as the Communications Chair for Union.

He and his wife, Karen, have three children, including the youngest, Ethan, who is a 2018 graduate of Ryle High and will attend NKU this fall.



Eric Dulaney

Eric Dulaney was born and raised in Fort Mitchell, KY. While living in Fort Mitchell, he served on the public safety committee from

2010-2012, then on the code enforcement board from 2012-2014.

Dulaney moved to Union in 2014. He was elected city commissioner on the next election cycle in 2016.

As Public Works Commissioner, Eric's duties involve maintaining infrastructure in the City of Union.

During his tenure as city commissioner, Eric executed a campaign for heroin awareness by distributing door-hangers on every door in the city, making Union the first city in Boone County to engage in the fight against the heroin epidemic.

Dulaney has a B.A. in psychology from Northern Kentucky University and an M.A. in industrial/organizational psychology from Western Kentucky University.

He currently works as a shipper/loader for TMK Ipsco in Wilder, KY, which is a manufacturer of steel pipes. He is also a member of the United Steel Workers Union Local 1870.

Dulaney has a daughter named Dayla and two grandchildren, Molly and Brogan.

City of Union



1843 Mt. Zion Rd. Union, KY 41091
Phone: 859/384-1511
Email: Melissah@cityofunionky.org

Hours of Operation:
Open 10 am-4 pm, M-F

Take TANK to Northern Kentucky end-of-summer celebrations!

Kentucky Symphony Orchestra 2018 Summer Concert Series

TANK will provide shuttle service for the last 2018 Kentucky Symphony Orchestra summer concert at Devou Park on Saturday, September 1 at 7:30 pm.

TANK buses will operate from Covington Catholic High School (on Dixie Highway) to the Amphitheater at Devou Park beginning at 6 pm.

The concert shuttles cost \$1 per person each way and will operate from 6 pm until 7:30 pm before the concert. Return trips will begin immediately after the concert is over.

<https://kyso.org/summer-series-at-devou-park/>



Save yourself the headache of driving and parking! Take a TANK bus to Riverfest!

Riverfest

If fireworks are more your thing, TANK is also providing bus service to the annual end-of-summer party on the river — Riverfest!

On Sunday, September 2, TANK will provide Riverfest Shuttles from **Northern Kentucky Univer-**

sity (NKU) Lot E (located on Kenton Dr. on campus) to the Newport Floodwall.

Fare for the Riverfest Shuttle is \$6 for roundtrip for adults. Children (45" and under) ride free. Tickets will be sold under the tent in Lot E. Tickets must be purchased prior to boarding the bus.

Buses will begin leaving NKU at 4 pm, with the last bus leaving at 7:15 pm. Buses will operate approximately every 10-15 minutes, depending upon passenger demand.

Return service to NKU will begin immediately upon completion of the fireworks.

The last bus will leave 30 minutes after the conclusion of the fireworks.

For more detailed information about TANK's Riverfest Park and Ride service or the Southbank Shuttle, please call TANK's information line at 859/331-TANK (8265) or visit us on the web at www.tankbus.org.

Boone County TANK Routes:

Local

- #1 Dixie Highway/Florence
- #98 Burlington-Florence Connector

Express

- | | | | |
|------|---------------------------------------|------|---|
| #1X | Houston Road/
Mineola Pike Express | #32X | Burlington Express |
| #2X | Airport Express | #35X | East-West Express |
| #22X | Richwood/
Walton Express | #39X | Petersburg Rd/
South Hebron Express |
| #28X | Empire Dr./
Industrial Rd Express | #40X | Worldwide Blvd/
North Hebron Express |
| | | #42X | Florence Hub Express |

Transit Authority of Northern Kentucky

TANK is the public transit authority that provides bus service in Boone, Campbell and Kenton counties and downtown Cincinnati.

Contact us! Phone: 331-TANK (8265) • Web: www.tankbus.org

Connect with TANK!

Facebook TANK (Transit Authority of Northern Kentucky) • Instagram tankbus



New programs and resources to serve the community

The Boone County Conservation District (BCCDKY) is busier than ever! We are continuing to build new programs and resources in order to better serve the community through natural resource protection. Check out our annual report at bccdky.org/public-records to see what we've been up to.

Education programs

Have you been to one of our free outdoor family programs yet? Visit bccdky.org/calendar-of-events for details on upcoming programs such as Art in the Park, Fall Color Hike, and Animal Tracking.

This Fall, BCCDKY will host a Forest Health Management Workshop. This workshop is geared toward community members, land-owners, and property managers who are interested in learning how to best manage their forested areas. Topics will include the natural history of Boone County forests, pollinator and wildlife habitat, and invasive species management! The workshop will take place on Saturday, October 27 from 9 am to 4 pm. Visit bccdky.org for details and to register.

BCCDKY also offers free STEM curriculum for K-12 schools! If you know a teacher interested in engaging students in the outdoors through topics such as soils, pollinators, and wildlife, call our office at

859/586-7903, ext. 3. Grants for special projects are also available - check out our webpage for examples of past projects!

Storm water management

This summer, BCCDKY broke ground on a project at the Boone County Campus of Gateway Community and Technical College. This project, funded through an EPA 319 grant, aims to manage the campus's storm water, which is one of the leading causes of pollution to our local waterways. The project includes features that will not only slow the velocity of storm water runoff but will also allow vegetation to filter out pollutants and slowly release cleaner water into the headwaters of Gunpowder Creek.

Gunpowder Creek Watershed resources

And don't forget! If you live in the Gunpowder Creek Watershed, call our office to learn about the special resources available to you! Over 20 Gunpowder Creek residents have already enrolled in our National Water Quality Initiative program focusing on flooding issues, erosion control, and soil health. Contact J.T. McMullen at jtmcullen23@gmail.com or call 513/240-7739 to learn more.



BCCDKY intern Tyler Sansom, a Thomas More College student, collects water samples from Woolper Creek



Students and faculty at Boone County High School plant a school garden with grant funds from BCCDKY.

Boone County Conservation District

859/586-7903
6028 Camp Ernst Road
Burlington, KY



Selecting quality child care

As a parent or the primary caregiver of a young child, deciding on child care can be a stressful decision. While thinking of your family's needs that need to be met in addition to quality, types of child care, location, and cost just to name a few can be overwhelming. Finding a quality child care setting for your child requires an awareness of best practices and standards that help to ensure the wellness, safety and growth of your child. Below are some tips you can use when looking for a quality program.

To select a quality program

1. Screen by talking with possible programs over the telephone. Ask about the caregiver's background and program practices. Ask for and check references and program licensing. Schedule a time to meet with those that seem like a good fit.
2. Meet and greet by watching the caregiver or staff with your child. Talk about ideas on child rearing and the provider's experience in caring for children. Ask questions regarding daily routines, programming and family involvement.
3. Decide on the best program for your child, you and your family.

Quality indicators

One way to find a quality program is to seek a program that has or is working towards a national accreditation or state quality rating. These programs go above the required state standards by meeting higher expectations — for example, staff are required to attend more trainings, group sizes are smaller and daily programming is enhanced.

Contact 4C for information regarding specific standards and measures used to earn an accreditation or a state quality rating.

NAEYC accreditation: The National Association for the Education of Young Children awards accreditation to child care centers and early education programs that meet national best practice standards.

State quality-rating systems:

Kentucky All STARS awards up to five stars to child care centers and family child care providers earning levels of quality above licensing requirements.

Tips for selecting quality child care

Questions to ask:

- What type of licensure or credential does the program have? Is the program quality-rated?
- How is discipline handled in the program?
- How are background checks completed and updated?
- What is the program's use of television or video watching?
- Do the director and lead teacher have college-level training in the field of child development?
- How long have most of the staff been employed in the program?

What to look for:

- Staff or caregiver qualities:
 - Warm, caring, patient and creative.
 - Talks to, laughs with and listens to children.
 - Reads, plays, sings and enjoys integrating with children.
 - Has training and experience working with children.
 - Sensitive to children's feelings and needs, knows how to comfort children.

- Respects yours and your child's cultural background.
- Interactive and welcoming to parents.

- Environment and safety

- Space is safe and free from possible hazards.
- Space is clean, well lit, roomy and comfortable.
- Emergency plans exist and exit drills take place.
- First Aid kits are available.
- First Aid trained staff or providers are present at all times.
- Children who become ill are cared for and isolated from the other children.
- Medications are stored and given out appropriately.

- Program routines

- Daily plans are in place for active and quiet play.
- Meals and nap times are consistent.
- Limits set for children are age appropriate.

- Family interaction

- Parents are asked to offer ideas and help with program planning.
- Caregivers talk regularly with parents about their child.
- Families receive notes or are informed about special events or activities.
- Family programs are set up to meet the needs of children,

parents and families.

- Families are welcomed and feel at ease.
- Parents are allowed to visit any time.
- Parent handbooks are available to parents.

This content was provided by 4C for Children in partnership with Success By 6 and The Boone/Campbell/Grant/Kenton and Pendleton Counties, Community Early Childhood Council as a part of regional Kindergarten Readiness materials prepared for our communities.



4C can help!

Contact 4C for Children for in-depth assistance in finding and evaluating child care options to meet your child's and your family's needs:

859/781-3511 x 1330

parents@4cforchildren.org

www.4cforchildren.org

Some helpful websites with additional resources:

Benefind: <https://benefind.ky.gov/KCCPS/ChildCare/>

Child Care Aware: <http://childcareaware.org/state/kentucky/>

MyPre-K: <https://www.mypre-k.com/>

Boone County Success By 6®



**BOONE COUNTY
SUCCESS
BY 6**

Lauren W. Kathman, Sr. Manager

859/534-5810

Upcoming events

“Quit the Littering!” Calendar Contest



The Solid Waste Division is seeking Boone County students from Kindergarten to 5th grade to help us out by thinking about the nasty litter issues that generate problems for our community and then come up with creative anti-litter drawings and/or slogans.

The 13 clearest and most creative drawings and the 12 best attention-grabbing anti-litter slogan writers will be chosen to be included in a 2019 calendar/coloring book that is distributed across the County.

We invite all the art/slogan winners to attend a Fiscal Court meeting in December, where they will receive awards and cool prizes. Entry forms will be passed out to each elementary school in Boone County in September; you can visit our website and print out an entry form: http://www.boonecountyky.org/departments/solid_waste/coloring_calendar_contest!.aspx

2018 Clean-Up Dates

• Monthly Clean-ups:

August 25 & Sept. 29, (8 am-2 pm)
Only at Boone County Public Works, 3275 Maplewood, Burlington

• **Fall Clean-Up:** October 17-20 (8 am-5 pm) at Boone County Public Works on Maplewood Dr., Union Pool off Old Union Rd., and Walton Public Works off High School Rd. (This location **does not accept tires**)

Clean-ups are intended for Boone County residents only; you may be asked to show proof of resi-

dency. Residents can bring unwanted appliances, trash, tires and other junk for disposal.

We do not accept from businesses. No hazardous waste, paint, liquid waste, dirt or concrete. Please come early and be prepared to help unload vehicle.

Household Hazardous Waste Collection Event

The Northern Kentucky Solid Waste Management Area and the Northern Kentucky Household Hazardous Waste Action Coalition are

joining forces to help you properly dispose of unwanted items. Residents of Boone, Campbell and Kenton counties can drop off select items at the **UC Health Stadium, “Home of the Florence Freedom,” 7950 Freedom Way, Florence, KY**

Only certain items will be collected and some restrictions apply. Please visit: <http://www.nkyhhw.org> for full details of event. Please bring the completed form with you on the day of the event, this will help with the flow of traffic and will reduce your wait time.

HOUSEHOLD WASTE COLLECTION EVENT REGISTRATION FORM

November 3, 2018 9 a.m. – 2 p.m.

City you live in: _____

County you live in: _____

Please place a check in the box next to the type of waste you will be recycling (select all that apply).

- Paper**
(Documents you would like shredded)
- Paint**
(All types – limited to 10 cans per vehicle)
- Hazardous Materials**
(Flammables, combustibles, corrosives, fuel, kerosene, pesticides, aerosol cans, etc.)
- Oil/Antifreeze**
(All types)
- Bulbs**
(4ft. & 8ft. fluorescent tubes, etc.)
- Electronics**
(TVs – limit of 2 per vehicle, computers, DVD players, etc.)
- Propane Tanks**
(20 lbs. only)
- Toner/Ink**
(Color and black and white)
- Batteries**

Please bring this completed form with you to the recycling event on November 3.

Boone County Solid Waste Management

Boone Co. Public Works Div. of Solid Waste Management

- **Mike Wilson**, SW Supervisor
859/334-3629; mike.wilson@boonecountyky.org
- **Andy Finke**, SW Communications & Customer Services
859/334-3151; afinke@boonecountyky.org
- **Dennis Gosney**, Solid Waste Recycling Manager
859/334-4808; dgosney@boonecountyky.org
- **Greg Middendorf**, Solid Waste Crew & Truck Driver

Updates for upcoming cleanup events, litter issues, burn bans, recycling information, and much more can be found on:

- Public Access TV- Channel 15
- http://www.boonecountyky.org/departments/solid_waste/index.aspx or
- **RECYCLING INFO GO TO:** www.bigbluebin.com

Personalizing learning in Boone County Schools

The Boone County Schools are committed to ensuring that each graduate be college, career, and life ready, and the district's strategic plan emphasizes student empowerment as a key component in reaching that goal. In order to achieve student empowerment equitably for all students across the district, personalizing learning environments are being developed in each school.

The US Department of Education provides this definition of personalized learning in the 2017 National Education Technology Plan Update:

Personalized learning refers to instruction in which the pace of learning and the instructional approach are optimized for the needs of each learner. Learning objectives, instructional approaches, and instructional content (and its sequencing) may all vary based on learner needs. In addition, learning activities are made available that are meaningful and relevant to learners, driven by their interests and often self-initiated.

Personalizing learning is a complex endeavor for any teacher. It involves engaging each student in a rich learning experience, measuring the student's learning in real time against education standards, analyzing student achievement data against the learning standard on a regular basis, and developing additional and varied learning experiences that are unique to the individual student that will ensure mastery of the skills and standards being taught.

The personalization of learning for each student is a dynamic instructional strategy. It is the opposite of a "one size fits all" approach to teaching and learning. It is not

a program. Nor is it a technology platform. However, the use of a technology-based platform or learning management system in a personalized environment is often essential so that the teacher can effectively tailor the learning experiences to the needs and interests of the individual learner. The most common learning utilized by Boone County classrooms are Canvas, Google Classroom, or Summit, and are selected by each school's Site Based Decision-Making Council.

One of the most important characteristics of personalizing learning is the ability to provide learning that is equitable, accessible, rigorous, and relevant to each Boone County student regardless of race, ethnicity, first language, culture, socio-economic background, physical and mental abilities, or geography. The Office of Education Technology at the US Department of Education give these additional reasons why personalizing learning is essential for students:

- When the pace of learning is adjusted for each learner, all learners have the time needed to demonstrate mastery.
- When learning is optimized and tailored for each learner, and driven by learner interests, it can be more meaningful and relevant, which can lead to greater engagement and achievement.
- When learners are given more choice, they tend to take more ownership of their learning and develop the academic mindsets, learning strategies, and self-regulated learning behaviors that are necessary for meeting immediate goals and for lifelong learning.
- When learning is supported by technology, learners can receive

Watch these recent UTube videos on personalized learning!

Stephens video: <https://youtu.be/4cbt1hHCbQw>

Cooper video: <https://youtu.be/tpgmNjavL6w>

Recognized as a Distinguished District of Innovation, the Boone County School district demonstrates a wide array of strengths, including team approaches to teaching and learning, focused professional development opportunities for staff, individualized programs for student success and strong partnerships between the schools, parents and the community. Personalizing learning for every student in collaboration with their instructors, students are active participants in setting goals, planning learning paths, tracking progress and determining how learning will be demonstrated. What makes Personalizing Learning so powerful in our district are the documented student achievement gains that have resulted from this innovation. This is Achieving Excellence Together!

more frequent and immediate feedback through formative assessments, quizzes, and checks for understanding with results provided to teachers and learners in real time.

- With the right tools, learning gaps that impede progress can be identified more quickly, allowing learners to close those gaps.
- The use of technology to provide teachers with the ability to tailor instruction to individuals allows teachers more time to provide targeted attention to learners who are struggling or who are progressing more rapidly than their peers, rather than being forced to "teach to the middle."
- When teachers can use technology to identify or modify existing resources more easily, teachers can then build stronger and deeper relationships with each learner and provide more resources for dealing with specific challenges. This can

promote a greater sense of belonging among students by demonstrating that there are adults who care that they thrive.

Parents of Boone County students who wish to learn more about how their children are benefiting from personalizing learning should contact their children's teachers or principal.

Boone County Schools

8330 US Hwy. 42
Florence, KY 41042

Ph: 859/283-1003
Fax: 859/282-2376



Know the truth about Juul

Many teens and young adults who use vaping devices don't know they contain nicotine

With the recent *Monitoring the Future Study* release indicating that nearly one in three 12th graders reported using a vaping device in the past year, it's imperative that parents are informed of the potential dangers that can result from vaping.

What is vaping?

Vaping is the act of inhaling and exhaling the aerosol, often referred to as vapor, produced by an e-cigarette or similar device. It's become more popular among teens than regular cigarettes, especially given that vaping devices can be used for anything from flavors like mango, mint or tutti frutti, to flavorings containing nicotine or THC, the chemical compound in marijuana that produces the high.

What are the risks?

There are several risks to vaping for teens. Below are three major ones for parents to be concerned about:

- 1) Vaping is often marketed to kids, downplaying the dangers.
- 2) Vaping chemicals used in the liquids can be more concentrated and dangerous.
- 3) Vaping can make the transition to cigarette smoking easier in adolescence.

Source: <https://www.vox.com/science-and-health/2018/5/1/17286638/juul-vaping-e-cigarette>

Please contact Abby Beausir at 859/341-4264, ext. 2158 or abby.beausir@nkyhealth.org. Learn more at www.boonecountyalliance.com.



There are several risks to vaping for teens. Parents need to be informed of the potential dangers.

This article contains copyrighted material the use of which has not always been specifically authorized by the copyright owner. In accordance with NKY Health's non-profit mission to prevent disease, promote wellness and protect against health threats, we are making such material available to advance understanding of the health risks related to e-cigarettes, vaping and other devices considered to be "smoking alternatives". We believe this constitutes a "fair use" of any such copyrighted material as provided for in section 107 of the US Copyright Law. In accordance with Title 17 U.S.C. Section 107, the material on this site is distributed without profit to those who have expressed a prior interest in receiving the included information for research and educational purposes. For more information go to: <http://www.law.cornell.edu/uscode/17/107.shtml>. If you wish to use copyrighted material from this site for purposes of your own that go beyond 'fair use', you must obtain permission from the copyright owner.



For more information on Boone County Alliance, please contact our coalition's coordinator at 859/341-4264, Ext. 2158 or by email to abigail.beausir@nkyhealth.org.

Six tips for a healthy school year for you and your family



Kids need at least 60 minutes of physical activity each day and are more likely to play when the adults get active too!

With kids back in school, now is a good time for the whole family to follow these six tips for a healthy school year. Make them life-long habits and they will boost performance, too!

KEEP GERMS AWAY. You can't learn or work when you are sick. Scrub your hands with soap and water for 20 seconds after using the bathroom and before eating. Be sure that everyone gets a flu shot in the

fall and make sure the whole family is up to date on all their vaccinations. When sick, cover coughs with a tissue or cough and sneeze into your elbow.

GET ENOUGH GOOD SLEEP. Getting the right amount of sleep helps improve your mood and performance. The quality of sleep is also important. Go to bed at the same time each night and get up at the

same time each morning, including on weekends. Keep electronic devices with screens out of your sleep space and keep the room quiet and dark.

EAT HEALTHY. Eating five fruits and vegetables a day is good for your brain and the rest of your body. Eating breakfast is also essential for focus and memory. Remember food safety, too. Be careful about food items in packed lunches that must be kept cold, like meats, dairy, and mayonnaise. Use insulated lunch boxes with ice packs.

STAY HYDRATED. Every cell in your body needs water to work properly. Be sure you drink enough water — 64 ounces (eight-8 oz. cups) each day. Carrying a water bottle with you can help. Adding slices of strawberries, lemons, or cucumbers can give it a twist.

UNPLUG AND GET OUT TO PLAY! Turn off the screens and play together outside as a family regularly. Kids need at least 60

minutes of physical activity each day and are more likely to play when the adults get active too. Wear sunscreen, apply insect repellents, and check for ticks after being outside, especially during the warmer months.

MAKE EMOTIONAL HEALTH A PRIORITY, TOO. Struggling with stress, sadness, or worry feels terrible and makes it hard to focus or make good decisions. Parents who are engaged with their kids and have frequent two-way conversations show kids that they care about what they are thinking and feeling. It can also help in detecting more serious issues that may need further professional help. Kids do listen to their parents and they also watch what you do. So, teach them healthy coping skills by taking care of your own emotional health as well.

NKY Health works to prevent disease, promote wellness, and protect against health threats. To learn about NKY Health's programs and services, go to <https://www.nkyhealth.org>.

Hepatitis A vaccination

A new requirement this school year is that all children must be vaccinated against Hepatitis A to enter school. This requires two doses separated by 6 months. Each child must have at least the first dose and provide a Kentucky Immunization Certificate to the school as proof.

With the outbreak of Hepatitis A in the Commonwealth of Kentucky, the Northern Kentucky Health Department is also urging adults to

get the Hepatitis A vaccine as well. Talk to your health care provider about obtaining the vaccine.



NKY Health



Boone Co. Health Center
7505 Burlington Pike, Florence, KY 41042
pb: 859/363-2060

District Office
8001 Veterans Memorial Drive, Florence, KY 41042
pb: 859/341-4264

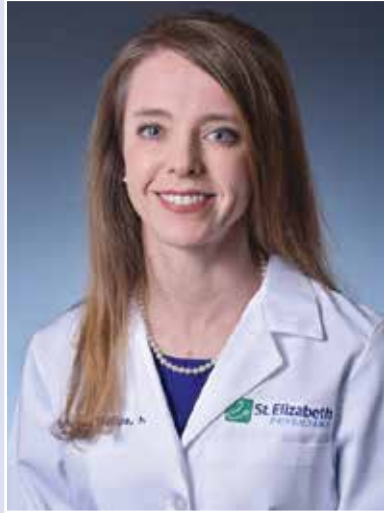
Advancing cancer care with new Center for Precision Medicine and Genomic Health

St. Elizabeth launched a cutting-edge precision medicine program and announced a key leadership role for the St. Elizabeth Center for Precision Medicine and Genomic Health.

St. Elizabeth has demonstrated a long-standing commitment to genetics, establishing a genetic counseling program in 1999 and hereditary cancer risk testing program in 2003. To date, there have been more than 15,000 genetic visits to St. Elizabeth. The St. Elizabeth Center for Precision Medicine and Genomic Health takes the commitment to genetics and precision medicine to a new, exciting level of care for patients.

Dr. Brooke Phillips, a physician in Hematology/Oncology at St. Elizabeth, will be leading this new program as Medical Director, bringing her expertise and vision to this paradigm-shift in cancer care.

“Precision medicine is a powerful approach to healthcare,” says Dr. Phillips. “At the St. Elizabeth Center for Precision Medicine and Genomic Health, we can use data from a patient’s DNA to tailor treatments specifically for them. Instead of a one-treatment-fits-all approach, we can select the most effective



“At the St. Elizabeth Center for Precision Medicine and Genomic Health, we can use data from a patient’s DNA to tailor treatments specifically for them. Instead of a one-treatment-fits-all approach, we can select the most effective medication and treatment for each patient and as a result, often times can improve outcomes.”

- Dr. Brooke Phillips

medication and treatment for each patient and as a result, often times can improve outcomes.”

Precision medicine can benefit many patients, including those with cancer. Studies are ongoing with many treatment options, but early evidence is showing promising results with molecular marker treatments in the oncology field.

“More than 75% of cancer treatments currently in development have a molecular marker to guide their use,” says Jamie Grund, a certified

Genetic Counselor at St. Elizabeth. “Precision medicine is the forefront of cancer care. We are thrilled to be offering this innovative approach to care to our patients in the Tri-State area.”

The St. Elizabeth Center for Precision Medicine and Genomic Health changes the way St. Elizabeth will care for patients moving forward. Highlights include:

- Four licensed genetic counselors
- Clinical research on targeted therapies

- Pharmacogenomics
- Integrated care with the St. Elizabeth Cancer Care Program, certified by the Commission on Cancer (CoC) since 2010.

Patients interested in learning more about precision medicine can schedule an appointment with a licensed genetic counselor at the St. Elizabeth Center for Precision Medicine and Genomic Health. Call 859/301-5396 for more information.

St. Elizabeth Healthcare



St. Elizabeth Covington
1500 James Simpson, Jr. Way
Covington, KY 41011
859/655-8800

St. Elizabeth Edgewood
1 Medical Village Dr.
Edgewood, KY 41017
859/301-2000

St. Elizabeth Falmouth
512 South Maple Ave.
Falmouth, KY 41040
859/572-3500

St. Elizabeth Florence
4900 Houston Rd.
Florence, KY 41042
859/212-5200

St. Elizabeth Ft. Thomas
85 North Grand Ave.
Ft. Thomas, KY 41075
859/572-3100

St. Elizabeth Grant
238 Barnes Rd.
Williamstown, KY 41097
859/824-8240

St. Elizabeth, GO Pantry goal: Knock out food insecurity this summer

St. Elizabeth Healthcare partnered with local nonprofit GO Pantry for the third year to collect basic food items to help children in Northern Kentucky stave off hunger during summer. Associates donated more than 1,388 boxes of food — 80 percent of what’s needed to feed about 300 families.

“These children and families are our patients, friends and neighbors,” said Garren Colvin, President and CEO of St. Elizabeth Healthcare. “It’s our responsibility to do everything we can to create a healthier Northern Kentucky, and that starts with ensuring our children don’t go hungry.”

GO Pantry, a nonprofit organization made up of volunteers, provides food to Northern Kentucky children.

GO Pantry’s GO Box program provides \$50 of groceries to cover breakfast and lunch for a week for an entire family. The organization works with family resource officers and guidance counselors in 22 schools in Boone County to identify students who otherwise depend on the school for most of their food.

“There’s a real need for summer feeding assistance in Northern Kentucky,” said Laura Dumancic, a Union mother of three and director of GO Pantry. “There are not a lot of options during extended school breaks, and many children look forward to going back to school because that means they’ll get a decent breakfast and lunch.”

More than 1,100 associates from St. Elizabeth participated in the three-week collection drive, which included a day spent at Master Provisions’ warehouse in Florence, Ky., sorting and checking each box for food items that might be damaged or expired.

Pick-up locations were staged at St. Elizabeth offices for a week. Kathy Burdette, RN, practice manager, packed her small Fiat with 13 boxes of food donated from her staff and patients at St. Elizabeth Florence Ewing Primary Care.

“As I was loading boxes into my car to drop off at St. Elizabeth, several patients stopped me in the parking lot and asked how they can help,” said Burdette. “The second

people hear about GO Pantry they want to get involved. No child should ever go hungry; it’s just not right.”

GO Pantry hopes to deliver 1,700 boxes to families this summer, about three-and-a-half semi-trucks worth of food.

“GO Pantry runs off the heart of the community and partners like St. Elizabeth,” said Dumancic. “These aren’t just boxes of canned goods, they’re security and hope. If you don’t have food, you don’t feel safe or loved and certainly can’t perform academically.”

If you are interested in volunteering or donating, visit gopantry.org/donate or call 859/760-6480.

New Surgical training facility in Northern Kentucky *Allows doctors to simulate surgeries and advance skills*

St. Elizabeth Healthcare and OrthoCincy Orthopaedics & Sports Medicine have partnered with FIVE Labs to build a unique, state-of-the-art bioskills lab and conference venue in Erlanger to serve the Northern Kentucky/Cincinnati region.

The first of the kind in the region, the bioskills lab is a training facility to support doctors, residents and other healthcare professionals in practicing new surgical techniques, and testing new products, devices and technology. The lab replicates the technology and equipment of modern operating rooms, allowing doctors to train and conduct simulated surgeries to enhance their skills in a controlled setting. The goal is to reduce complications and improve patient outcomes.

The new facility also will be a conference venue for healthcare providers and regional businesses, allowing rental space for large events, in a cutting-edge, modern facility. The features include:

- Large space to hold events, catering permitted.
- Large auditorium to hold training or learning sessions.
- Advanced audio/visual equipment with in-house support staff.
- Smaller classrooms.
- Locker rooms and kitchenette.
- Close proximity to Cincinnati/Northern Kentucky International Airport and hotels.

FIVE Labs’ Tampa, FL location is one of the largest and busiest surgi-



This first-in-the-region facility will help doctors and surgeons learn new techniques.

cal training facilities in the United States. St. Elizabeth Healthcare and OrthoCincy Orthopaedics & Sports Medicine feel the new facility will

help further the practice of orthopaedics and attract more conferences and training events to the region.

Delivering information, education and solutions

The Boone County Cooperative Extension Service is part of the University of Kentucky and Kentucky State University off-campus information network. Let us connect you to UK, KSU, and the world. We deliver information, education, and solutions, and we grow ideas into better communities, stronger local economies, and healthier lives. The Extension office serves Boone County in three program areas: Agriculture and Natural Resources, Family and Consumer Sciences, and 4-H and Youth Development.

The Agriculture and Natural Resources branch of Extension provides services like free soil testing for Boone County residents, commercial pesticide applicator training, gardening classes, farm visits, and hiking and nature-based programming at our Boone County Environmental and Nature Center, 9101 Camp Ernst Road, Union.

The goal of the Family & Consumer Sciences Program is to improve the quality of life for individuals and families. Programs focus on economic, social, and physical well-being of our clients. We strengthen personal and family relationships, encourage healthful choices, and identify resources to extend income. FCS programming includes classes on cooking, money management, health and wellness, and much more.

4-H and Youth Development offers clubs and programming that seek to promote education and civic responsibility within children and teens. Our 4-H agents and staff work hard to help our youth discover their potential by exploring new interests and fostering creativity and a love of learning, all while giving back to their community.

Peruse through our exciting and informative upcoming events and see how Extension can make a difference in your life!

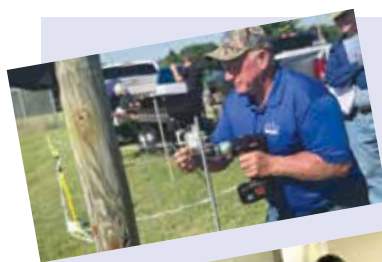
Family and Consumer Sciences

We are educators, sharing the University of Kentucky's research knowledge with individuals, families and communities to improve quality of life. The community is our classroom as we deliver programs focusing on nutrition, health, resource management, family development, and civic engagement.

If you are interested in serving on our Family and Consumer Sciences Advisory Committee, call the office to express your interest. The next advisory committee meeting is Wednesday, November 7 from 10 am-12:30 pm, lunch provided. The committee provides guidance on educational programming needs for the community and helps implement and evaluate the plan of work for the department. We need your ideas and input to ensure we are serving all people with educational programming that helps.

Several engaging programs scheduled for the fall include:

- FRI, 9/7, 10 am-2 pm: Living with Arthritis (lunch provided). Health professionals will talk about arthritis and tools that may help make life easier in the home, explore exercises, and enjoy an arthritis-friendly lunch.
- FRI, 10/5, 10 am-2 pm: Bone and Joint Health (lunch provided). Hear from speakers, explore physical activity and enjoy a light, bone-and-joint-healthy lunch.
- TUE, 11/13, 10 am-2 pm: On the Road to Retirement: Are



Your Money Ducks in a Row or Running Amok? (lunch provided). Speakers will talk about current scams, Medicare, insurance, and basic financial planning.

4-H and Youth Development

The Boone County Cooperative Extension Service is excited to announce its new 4-H Garden Club, a joint effort between our 4-H and horticulture teams. Educational sessions will primarily be led by Master Gardener trained volunteers, 4-H Youth Development Education Agent Paul Adkins, and Senior Program Assistant for Horticulture Education Gina Ligon.

Youth participants will be led through educational and hands-on

activities in beginner gardening, tour local green industry businesses, work in gardens on the Extension campus, gain valuable leadership skills, give back to the community through service projects, develop new life-skills, and most of all, have fun interacting with their peers outside of the classroom.

Club meetings will be held once a month. The club is available to youth participants ages 9 and older; however, adults are welcome to volunteer, as well. The first club meeting is scheduled for September 24 from 6-7:30 pm at the Boone County Cooperative Extension Office, 6028 Camp Ernst Road, Burlington. For more information or to register your child, call the office or search the 4-H online class registration list on our website.

Boone County Cooperative Extension Service



University of Kentucky
College of Agriculture,
Food and Environment
Cooperative Extension Service



Disabilities accommodated
with prior notification.

Office Building: 6028 Camp Ernst Rd. • Enrichment Building: 1955 Burlington Pike
Burlington, KY 41005

PH: 859/586-6101 • FAX: 859/586-6107

E-mail: dl_ces_boone@email.uky.edu

Watch for the new Adult Outreach van out and about in Boone County



The Adult Outreach van delivers library materials to people in Boone County in independent living, assisted living and nursing facilities.

Ever wonder about the big library bus you see around town?

Our Youth Services Outreach staff use the bus to bring the library experience and resources into the community.

Children look forward to regular visits from their “library lady”

Many adults report some of their fondest childhood memories included trips to the neighborhood

bookmobile, and as a library system, we are thrilled to continue this service. Our current bookmobile/library bus has been in operation since 2004 and makes regular visits to early care and education centers, summer camps, and neighborhoods. Library staff deliver storytimes, enrichment activities, teacher resources, and library materials to an average of 1,300 people per month. However, hundreds more are served when the bus participates in larger community events like Touch-a-Truck or the

Boone County Community Activities Fair.

Staff also interact with just as many people on outreach visits without the bus to schools and community venues. Making social, emotional and intellectual connections with people is at the heart of everything we do and can only be achieved by having a consistent presence in the community.

Children look forward to regular visits from their “library lady”, and staff take pleasure in watching them take on new challenges and develop over the school year.

Service with our current library bus, unfortunately, has run its course but a new library bus is on the horizon. The library bus has experienced much wear and tear in its 14 years of operation and has consequently become unreliable. The prospect of a new vehicle has us all excited and will bring our programs and services to the forefront



A sneak peek at the interior of the new Youth Services Outreach van

of everyone’s minds rather than its mechanics.

For more information about Youth Services Outreach, contact Lisa at 859/342-2665, extension 8127, or by email at lsensale@bcpl.org.

Adults look forward to visits from their library ladies, too!

The Adult Outreach Department delivers over 1,000 items to approximately 165 people each month. These people live in individual homes, independent living, assisted living and nursing facilities. Items delivered include books, music, movies, and periodicals. Library staff have introduced retired adults to virtual reality, reminisced about Boone County Christmases past and touched on many points in between. Service thus far has been provided from the trunks of employees’ private vehicles. By the end of summer, a new Adult Outreach van should be ready to roll. This van will enable us to serve more customers without an increase in library staff. If you know of an organization, center or facility that would be interested in library programming, please contact Kaitlin at 859/342-2665, extension 8157, or by email at kbarber@bcpl.org.

Boone County Public Library

Five locations to serve you!

One phone number:
859/342-BOOK (2665)



©2018 All rights reserved. Reproduction in whole or in part without permission is prohibited. WHAT'S HAPPENING!™ is published by Rivertown Communications, www.whatshappeningnews.com. Although all information is believed to be reliable, Rivertown Communications cannot guarantee the accuracy of information presented in this publication. All articles are submitted and approved by participating organizations and do not necessarily represent the views or opinions of the publisher. WHAT'S HAPPENING!™ is paid for by organizations which are directly or indirectly supported with public funds and/or are special districts and public utilities.

Visit www.whatshappeningnews.com for all the news in Boone, Kenton, Campbell and Oldham counties

Boone County Parks & Recreation

Don't miss these great events!

Visit our website for all of our upcoming programs, classes and events. Online registration available.
www.boonecountyky.org/parks

38th Annual Boone Woods Arts and Crafts Show — FREE!

Sunday, Sept. 16, 11 am-3 pm,
Boone Woods Park

Area artists will be selling their arts and crafts. Bluegrass Music will be on the Creekside Stage. All ages welcome.

Community Garage Sale Family Fun — FREE!

Oct. 6 (Rain Date - Oct. 13),
8 am-1 pm, Boone County Administration Building

Bring the whole family to shop 50 + booths. It's free to shop the rows of lost treasure. If you would like to reserve a spot for the Community Garage Sale call the Parks office at 859/334-2117.



Jack-O-Lantern Contest & Walk — FREE!

Oct. 27, 7:30-9 pm, Boone County Fairgrounds, 5819 Idlewild Rd., Burlington, KY

Walk the illuminated trail lined with Jack-O-Lanterns. We will have hayrides and refreshments. This is a family friendly event. To enter the Jack-O-Lantern Contest please visit our website or call 859/334-2117.

Christmas Tree Lighting and Visit with Santa & Friends —FREE!

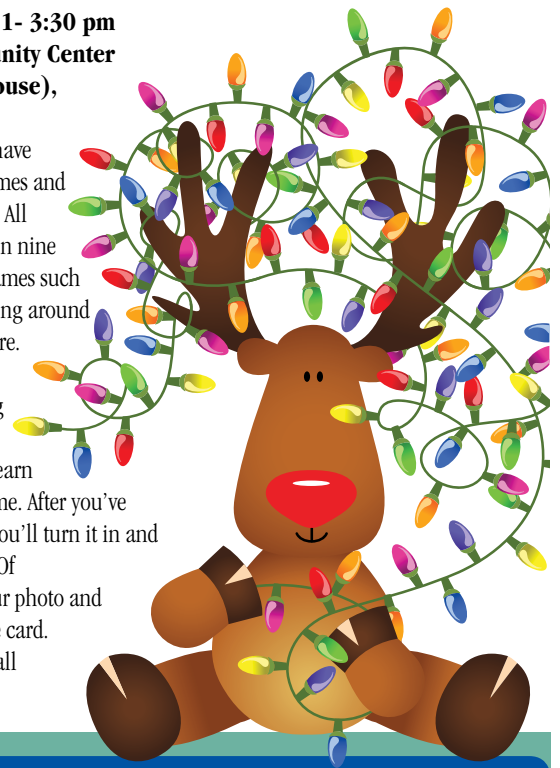
Friday, Dec. 7, 6-8 pm
Ferguson Community Center (Historic Courthouse)
Burlington, KY

The Christmas Season kicks off with the Christmas Tree lighting in historic downtown Burlington. Enjoy music & refreshments while waiting for Santa to arrive to light the tree. Join Santa, Rudolph, Frosty and Chris Mouse after the lighting, on the second floor of the Courthouse for a visit and photos. Make a Christmas craft to take home.

Reindeer Games

Saturday, Dec. 8, 1- 3:30 pm
Ferguson Community Center (Historic Courthouse),
2nd floor

Oh, what fun you'll have playing Reindeer Games and earning your Antlers! All ages can participate in nine different Reindeer Games such as Jingle Bell Toss, Ring around the Reindeer and more. You will get a game card at the beginning and then go to the different games and earn a sticker for each game. After you've completed all nine, you'll turn it in and receive your Antlers! Of course, we'll take your photo and place it on your score card. (Register online or call the Parks Office.)



Boone County Parks & Recreation



BOONE COUNTY
PARKS

Boone County Parks & Recreation
5958 Garrard Street
Burlington, KY 41005
859-334-2117