

WHAT'S *Happening!* in Boone County, Kentucky™



Fall 2020/Winter 2021

Boone County Schools Fall 2020 Re-entry Plan

Dear Students, Parents and Staff,

As we prepare for returning to school in person, for everyone's safety, Boone County Schools will be following KDE and CDC guidelines for in-person learning. Social distancing of 6 feet will be required within classrooms, class sizes will be reduced and social distancing will occur in common areas. Professional learning will be provided to staff regarding social distancing. We will limit all non-essential visitors and there will be no sharing of supplies and reduced materials traveling from home to school. Each building will communicate school specific expectations for arrival and dismissal.

Education will be provided on the importance and proper use of masks for staff, students, and families. All students (1st grade and up) and all staff are required to wear a mask if a physical distance of 6 feet cannot be achieved and masks will be required to ride on district buses. "If you move, you mask."

All student and staff temperatures will be checked upon entering the building. A temperature of 100.4 or above will result in being sent home. A student or staff member sent home with COVID-19 symptoms who has a negative COVID-19 test or the symptoms have subsided may return to school once they are fever-free (without fever reducing medication) for 24 hours. If we have a known positive case with students or staff, the Health Department will be notified to execute a contact tracing investigation.

Hand and surface cleaning supplies will be readily available to staff and each building will contain multiple hand sanitizing stations. Daily cleaning protocols will be maintained. Cleaning priorities will focus on high touch and high traffic areas. Every bus will be sanitized after every route.

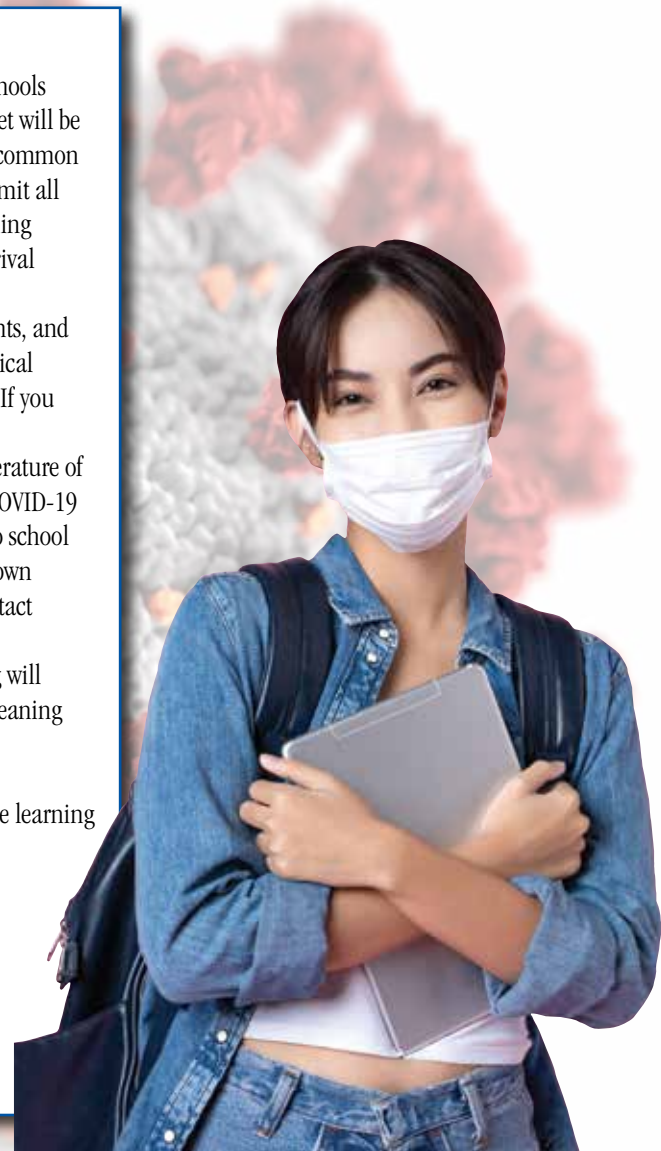
Breakfast and lunch will occur in reduced groups. All students participating in distance learning will have the option to do a safe breakfast and lunch pick up at school.

Additional information and updates can be found at boone.kyschools.us.

Sincerely,

Matthew L. Turner
Superintendent

See page 2 for more information about Boone County Schools' re-entry plan.



In this issue:

BC Conservation District: 13
BC Cooperative Extension: 12
BC Fiscal Court: 7-10

BC Golf Courses: 10
BC Parks & Recreation: 9
BC Public Library: 6
BC Schools: 1 & 2

BC Solid Waste Mgmt.: 10-11
City of Florence: 16
NKY Health Department: 3

St. Elizabeth Healthcare: 4-5
Sanitation District 1: 14
TANK: 15

Pathway to Re-entry

On August 10, Governor Beshear issued a recommendation that schools in Kentucky open the school year utilizing virtual instruction. The Governor's decision is supported by the Kentucky Department for Public Health and the Kentucky Department of Education, and as a result, the Boone County Schools

moved to the RED status listed on our district reopening plan. Therefore, school began on Tuesday, August 25 with instruction being provided virtually. We are prepared to return to a YELLOW status and in-person instruction as soon as it is safe to do so.



Boone County Pathway to School Re-entry

With guidance from the Kentucky Department of Education, the NKY Health Department, and the Boone County Health Department

Option 1: In-Person Instruction	Option 2: Virtual Instruction
FULL IN-PERSON INSTRUCTION - When COVID-19 safety alerts have subsided - When safety guidelines are reduced or eliminated	100% VIRTUAL
IN-PERSON & REMOTE INSTRUCTION - When COVID-19 safety alerts are in effect - When guidelines from state are in place - Our schools may use a hybrid schedule to safely reduce the number of students in a school at a given time.	100% VIRTUAL
REMOTE INSTRUCTION - When COVID-19 safety alerts are at the highest level - School buildings are closed	100% VIRTUAL

Hybrid Instructional Model

Boone County Schools will use a blended learning approach to maximize effective instruction and optimize safety during the COVID-19 pandemic
AA W BB

In an AA W BB instructional model:

- One half of the student body in a school (the A group) is present for face-to-face instruction on Monday and Tuesday, while the other half (the B group) is learning remotely.

- All students are at home on WINSday (Wednesday) receiving "What I Need" through personalized virtual instruction.
- The other half of the students in the school (the B group) is present for face-to-face instruction on Thursday and Friday, while the A group is learning remotely.

In this hybrid model, our students will have the same two days face-to-face instruction each week, and they will be receiving remote instruction the same three days of every week. If your student is in the A group, he/she will be learning at school on Monday

and Tuesday and remotely Wednesday, Thursday and Friday. If your child is in the B group, he/she will be learning remotely Monday, Tuesday and Wednesday and at school Thursday and Friday.

WHAT WILL FACE-TO-FACE LEARNING DAYS LOOK LIKE FOR MY CHILD?

Direct Instruction: Face-to-face instruction will look much like a typical school day for students; however, there will be fewer students in the classroom to allow for social distancing. Students will receive direct instruction, assessments activities and assignments from a teacher in a classroom, possibly through a flipped classroom design.

WHAT WILL REMOTE LEARNING DAYS LOOK LIKE FOR MY CHILD?

Virtual Instruction: Students will log onto a digital platform on these days. Remote learning days for students may include paper or digital activities, a flipped classroom, digital instructional tools and live streaming or pre-recorded videos of teachers teaching lessons. The day's instructional resources assessments activities and assignments will be outlined for the student for each remote learning day.

HOW WILL MY CHILD WIN ON WINS DAYS (WEDNESDAYS)?

Students will WIN on WINSdays in Boone County by getting "What I Need" personalized instruction through connection, clarity and collaboration.

Students need to connect: WINSdays can give students and parents the opportunity to connect individually with their teachers for one-on-one support, either in-person or remotely. Teachers may also build community by holding whole group remote sessions with A and B students. Staff will work to connect students with individualized, challenging enrichment opportunities.

Students need clarity: WINSdays give the students and teachers opportunities to meet in small groups so teachers can address misconceptions, re-teach and re-assess and give students feedback on their work to move the learning forward.

Students need collaboration: Students need a team of teachers supporting them who collaborate on WINSdays to design instruction with the goal of meeting the needs of each individual child. Students need some of this time to collaborate with peers to develop and practice critical thinking skills.

All Northern Kentucky schools go tobacco-free

During the 2019-2020 academic year, all Northern Kentucky school districts committed to becoming 100% tobacco-free schools. This is an amazing accomplishment and a great step toward creating the healthiest environments for Northern Kentucky students to learn and grow. Kentucky House Bill 11 was passed in 2019, prohibiting the use of any tobacco products, alternative nicotine products, or vape/e-cigarette products on Kentucky school property. School boards were given three years to either opt-out or adopt the 100% tobacco-free policy, which would include all property, vehicles and school-related trips or activities. The Northern Kentucky school districts

quickly moved to pass or update their tobacco-free policies.

This policy intervention was one of many efforts to curb the rise in youth e-cigarette use. E-cigarette aerosol contains high levels of addictive nicotine and other harmful chemicals such as heavy metals, volatile organic compounds and ultrafine particles that can be inhaled deep into the lungs. According to the 2018 Kentucky Incentives for Prevention (KIP) Survey, 2 out of every 10 tenth graders in the greater Northern Kentucky region used e-cigarettes at least once in the last 30 days.

There are free resources available for Northern Kentucky teens wishing to address their cigarette or

e-cigarette use. *My Life My Quit* is free, confidential and made for teens. Through this program you can text a quit coach or call for support, learn how to cope with stress in healthy ways, and get tips and the support you need to quit for good.

For more information, visit <http://mylifemyquit.com/>.

The Northern Kentucky Health Department serves more than 400,000 residents of Boone, Campbell, Grant and Kenton Counties. Our goal is to prevent diseases, promote wellness and protect against health threats. The health department's vision for Northern Kentucky is to "be a valued leader and community partner, with the resources needed to

effectively address public health challenges so Northern Kentucky is the healthiest region in the nation."

For any questions or for assistance in strengthening your school's smoke-free policy, please contact Cady Cornell at 859/363-2082 or visit www.nkyhealth.org.

WELCOME TO OUR
TOBACCO-FREE
CAMPUS



MY LIFE MY QUIT

WIC is here for you

What is WIC?

WIC (Women, Infants and Children) is a federal program administered by the USDA that provides specific nutritious foods along with nutrition and breastfeeding education at no cost. More than 7,000 individuals participate in WIC in Northern Kentucky. WIC services are provided to income eligible

and nutritionally at-risk pregnant, breastfeeding and postpartum women, infants and children up to 5 years old.

WIC brings more to the table than good food

■ **WIC is for good health.** At WIC, you can get answers to your health and nutrition questions. WIC helps families

make infant feeding choices and encourages breastfeeding, childhood shots and children's growth checkups.

■ **WIC helps families save money.** WIC families get monthly supplies of foods high in protein, iron, vitamin C and calcium, including milk, eggs, cereal and juice.

■ **WIC is for all kinds of families.** It is short-term assistance that helps families help themselves. You can receive WIC even if you are working. Eligibility requirements include:

- Be a pregnant, breastfeeding or postpartum woman; OR an infant/child up to 5 years old
- Have a household income at or below 185 percent of the poverty level

- Meet income guidelines, OR have a Kentucky medical card, receive Kentucky Transitional Assistance Program (K-TAP) benefits or food stamps (SNAP), or have a pregnant woman or infant in the family who receives Medicaid or K-TAP
- Be a resident of Kentucky

■ **WIC supports our local economy.** Last year, more than \$5.2 million was spent in Northern Kentucky at local stores to provide nutritious foods for families through WIC.

Call the location listed below to make an appointment today!

Boone County Health Center
7505 Burlington Pike
Florence, KY 41042
859/363-2060

NKY Health



Boone County Health Center
7505 Burlington Pike, Florence, KY 41042
phone: 859/363-2060

District Office
8001 Veterans Memorial Drive, Florence, KY 41042
phone: 859/341-4264

Is it allergies, cold, flu, or Coronavirus?

Does the anxiety of a national pandemic have you questioning every sneeze, sniffle, runny nose or headache? Well, you aren't alone. "What are the symptoms of coronavirus?" has been a top search term on Google for several months. The problem is that it seems there are similar symptoms for allergies, a cold, the flu, and coronavirus, also known as COVID-19.

What are the symptoms for COVID-19?

COVID-19 is a new strain of coronavirus that emerged in the United States in early 2020. This strain of coronavirus has never been seen before and scientists are still learning about how it's spread as well as the variety of symptoms in relation to different age groups. There are some common symptoms to be aware of that can range from mild to severe. Common symptoms include:

- Fever or chills
- Cough
- Shortness of breath or difficulty breathing

- Fatigue
- Muscle or body aches
- Headache
- New loss of taste or smell
- Sore throat
- Congestion or runny nose
- Nausea or vomiting
- Diarrhea

What are the symptoms of seasonal allergies?

The overlapping symptoms between seasonal allergies and COVID-19 are mostly respiratory, but every little cough or sniffle seems to cause anxiety. Before you panic, check your temperature. Seasonal allergy sufferers do not have a fever, whereas fever is the top symptom for COVID-19. The most common symptoms related to seasonal allergies include:

- Sneezing
- Runny or stuffy nose
- Watery and itchy eyes
- Itchy nose, throat, sinuses

It is rare to have a headache, or shortness of breath with seasonal

allergies, but some people may experience those symptoms as well.

What are the symptoms for a cold?

The common cold is an infection of your nose and throat. It can be annoying and drag on for days. The symptoms are very similar to the flu, but less severe. Over-the-counter medications can help manage symptoms of the cold. Symptoms of the common cold include:

- Body aches
- Cough (producing phlegm)
- Post-nasal drip
- Sneezing
- Sore throat
- Runny or stuffy nose

What are the symptoms for the flu?

When you have the flu, it usually hits you like a ton of bricks. You are fine one minute, and the next minute you don't want to get out of bed. The flu is a virus that can affect your upper respiratory system (nose,

throat, lungs). Common symptoms of the flu include:

- Body aches
- Chills and fever
- Cough
- Fatigue
- Headache
- Sore throat
- Stuffy nose

If you are experiencing mild respiratory symptoms, we recommend self-isolation at home, taking care of yourself and contacting your primary care provider to determine next steps. If you are experiencing serious symptoms, such as difficulty breathing or chest pain, call 911 immediately.

Taking these precautions can prevent the spread of disease and help protect your health and the health of those around you. If you have questions about any of these illnesses or concerns about COVID-19, call 1-800-737-7900 to schedule a virtual video visit with your provider from the comfort of your home. For more information visit stedocs.com/our-services/virtual-health.

Renowned mitral valve heart specialist joins St. Elizabeth



Mario Castillo-Sang, MD

Cardiothoracic surgeon Mario Castillo-Sang, MD, has joined St. Elizabeth Healthcare, bringing to the Northern Kentucky

Washington University School of Medicine/Barnes-Jewish Hospital in St. Louis, Mo., Dr. Castillo-Sang established a minimally invasive mitral valve surgery program at the Medical University of South Carolina, Charleston, S.C., and more recently built a similar program at The Christ Hospital in Cincinnati.

He has performed nearly 400 minimally invasive mitral valve surgeries, repairing or replacing the mitral valve that regulates blood flow from the left upper chamber of the heart (atrium) to the left lower chamber (ventricle). He has

distinguished himself nationally with his skill and success with complex mitral valve surgeries. In addition, he performs the highest volume of LVADs implant surgeries for advanced heart failure in Greater Cincinnati.

Dr. Castillo-Sang also is among Greater Cincinnati's most experienced LVAD surgeons and performs a wide range of other heart surgeries. LVADs are permanent heart pumps implanted to help patients who have severe heart failure live longer. Dr. Castillo-Sang plans to establish

an LVAD program at St. Elizabeth Heart and Vascular Institute.

"I think that the spirit of the people who work at St. Elizabeth is what drew me here," Dr. Castillo-Sang says. "Everyone on this team treats patients as if they are somebody's son or somebody's father. These are people who will listen to you, who will be there for you and not treat you as a number. This team offers truly compassionate care that is at the highest of the spectrum in quality and technical prowess. It's not common that you have a center with the offerings we have here."

National consortium studying cancer patients with COVID-19

St. Elizabeth is part of a group of cancer centers and other organizations joining together to form the COVID-19 and Cancer Consortium (CCC19) to collect and share data about cancer patients infected with the coronavirus (COVID-19).

“We’re really trying to get an idea of how this virus impacts the cancer population. We’re studying as many patients as we can who’ve been impacted by cancer and COVID-19 to determine what the outcome might be and how that outcome might change depending on the treatment that they’re getting,” says Dr. Dan Flora, Medical Oncologist at St. Elizabeth, who is spearheading St. Elizabeth’s CCC19 participation.

CCC19 put the data to use with record speed. The registry already contains information about several thousand cancer patients with COVID-19. CCC19 released its first findings in an article published on May 28 in the leading medical journal, *The Lancet* (manuscript number THELANCET-D-20-09079R1).

The study’s findings suggest that the 30-day fatality rate for cancer patients with COVID-19 infections is about 13 percent – more than twice the rate of the general population. Early results indicate that active can-



Oncologist Dr. Dan Flora is leading an effort at St. Elizabeth to collect and share data on cancer patients infected with COVID-19 as part of a national study.

cer treatments, like chemotherapy, do not seem to impact the severity of the illness or the overall outcome of the infection. Investigators conclude that patients undergoing cancer treatments may continue with appropriate caution.

Research efforts like this will be invaluable when determining best practices for the care of cancer patients who also have COVID-19,

according to Dr. Flora. “It will help us guide our decisions,” he says.

The commitment to leading-edge research is one of the cornerstones of St. Elizabeth’s oncology services and part of an already strong foundation they intend to build upon in the future with a new Cancer Center opening this fall on the St. Elizabeth Edgewood campus, says Dr. Flora.

“Research is going to be one of the pillars of the new Cancer Center. We want to prioritize cancer research as a way to find the best possible treatments for our patients. Certainly, by studying the outcomes of cancer patients, including cancer patients with COVID-19, we can learn about how to give the best treatment safely,” he explains.

St. Elizabeth Healthcare



St. Elizabeth Covington
1500 James Simpson, Jr. Way
Covington, KY 41011
859/655-8800

St. Elizabeth Edgewood
1 Medical Village Dr.
Edgewood, KY 41017
859/301-2000

St. Elizabeth Florence
4900 Houston Rd.
Florence, KY 41042
859/212-5200

St. Elizabeth Ft. Thomas
85 North Grand Ave.
Ft. Thomas, KY 41075
859/572-3100

St. Elizabeth Grant
238 Barnes Rd.
Williamstown, KY 41097
859/824-8240

Report to the Community Fiscal Year 2019-20

Boone County Public Library's fiscal year ending June 2020 started off great! The Hebron Branch opened on July 29 utilizing green space and nature with a one-mile StoryWalk, large windows, an amphitheater and a shaded patio. The inside offers early literacy interactives, study rooms, retired adult area, and the Boone Innovation Lab (Makerspace). The Scheben Branch became a passport acceptance agency and study rooms were added to both Florence and Walton making five locations that have quiet spaces. The Lents Branch was sold.

BCPL joined the Northern Kentucky Forum partnership (Campbell and Kenton County Public Libraries, and Scripps Howard Center for Civic Engagement at NKY) to host public discussion of public affairs as they relate to NKY. The Forum's goal is civil, civic discourse and is nonpartisan, having no affiliation with a political party.

The Library Board entered in an agreement with MSR to do a Facilities Master Plan Study to help the Library plan for the future. This study will help us to identify service priorities for Boone County.

The Library received a \$12,000 grant from the Boone County Early Childhood Fund to pilot a STEM Storytime series. The Local History Department received an award in Arts, Culture and History for the Boone County African American History Project from the National Association of Counties. The department also accepted the Power of Libraries Award from SirsiDynix for the African Americans of Boone County History Project.

The Library was on pace to set new records in visits, program attendance, and circulation. And then the pandemic hit closing all physical



The Hebron Branch opened on July 29 and utilizes large windows, green space and nature.

locations. The Library had to pivot from 85% in-person services to 100% digital. Expired cards were renewed. The website was updated to include resources for education and entertainment. An Instant Digital Card for Kentucky Libraries Unbound and a Digital Library Card for research tools were created. A redesign of the online catalog was launched making it easier to identify digital items. Three new research tools were added including Niche Academy and CreativeBug. And the Summer Reading program was moved entirely online.

After in-person, in-the-building programs were canceled through December, library programming was moved online when possible. Storytimes can be viewed on the Library's YouTube page, although copyright issues limit the time they will be available. Virtual adult programs consist of writer's groups, D&D games, book discussion groups, etc. And if you follow the Library's Facebook page, you will receive a notification when we go Live for a program.

The Library conducted a project

to document Covid-19, a history in the making. Questions were asked on BCPL's social media channels. Local History will compile the responses and make them available to the public.

On May 18, all locations began offering curbside pick-up, a service that was in the works prior to the Pandemic. This service will most likely stick around after the "return to normal." Since browsing the collection was not an option, there was an increase in the Reading Recommendations requests in which teens and adults complete a questionnaire and then BCPL staff create a personalized reading list. Newly developed is the children's version in which parents fill out the request and staff create a bundle of up to 10 books on

a subject of interest and/or reading level. The forms can be found on BCPL's website.

On June 15, BCPL locations opened their doors with reduced hours due to maximum occupancy and reduced staff. Half the seating and toys have been removed and computers spaced for social distancing. Desks are equipped with sneeze guards and masks are required. The meeting rooms remain unavailable as they are being used for storage and quarantining returned items.

While 97% of the Library's revenue comes from local tax dollars, additional funds from the State help with operating costs. Unfortunately, all state aid to libraries was eliminated during the 2020 Kentucky Legislative Session. BCPL's tax rate is 5.1 cents for every \$100 of assessed property value. To see how much you pay and the value of the Library services to you, visit bcpl.org/about/calculators/.

We want to hear what you have to say! Please send your comments or suggestions to director@bcpl.org.



All Library locations offer curbside pick-up.

Boone County Public Library



Six locations to serve you!
One phone number:
859/342-BOOK (2665)

Mary Ann Neltner celebrates 40 years with Boone County Parks & Recreation

Mary Ann Neltner celebrated her 40 year anniversary with the Boone County Parks Department on April 14. Mary Ann studied Parks & Recreation Administration at the University of Kentucky and graduated with her degree in 1979. Her first job out of college was with the Boone County Parks Department. At that time they were above the corner grocery store in Burlington. There were four employees in the office and four maintenance staff for the department. Mary Ann conducted volleyball leagues, community education classes, children's programming and tee-ball. After the first year they began implementing special events, one being the Boone Woods Arts and Crafts Show, which we still hold annually. The first year the show was held, they had a total of 15 vendors and approximately 100 attendees. To date we have between 40 and 50 vendors and 2000-3000 people at the



Right: Mary Ann Neltner on the job in 1980. Above: Mary with all the parks staff on winning the 2019 Kentucky Recreation & Parks Society Class 4 Department of the Year.

event. Soon after they began adding Concerts at the Creekside Stage, Family Fun Nights, which introduced live performances, Breakfast with Santa and the Jack-O-Lantern Contest & Walk. Mary Ann played a pivotal role in the development and execution of both programming and special events. Throughout the years,



Mary Ann has added new programs and events that are family friendly. Her goal is to provide services for everyone in our community. After 40 years she is thrilled to see the children who grew up in her programs, bringing their own children to our programs now.

Her contribution to the residents of Boone County does not go unnoticed. Upon the celebration of her 40-year anniversary with Parks, many of her former co-workers and staff wished her well and thanked her for the guidance and life skills she instilled in their lives.



BOONE COUNTY
SOLID WASTE

Due to COVID-19 safety guidelines and the change in our operations, the 2020 Fall Cleanup has been cancelled.

SCAN ME FOR DETAILS



Boone County Solid Waste offers a variety of options to properly dispose of your waste

Recycle at our **Big Blue Bins** across Boone County. For locations, visit www.bigbluebin.com.

Acceptable items: plastic bottles/jugs, glass bottles/jars, metal cans, paper, and cardboard.



Dispose of household hazardous waste at the **Household Hazardous Waste Collection Event on November 7th.**

For more details, visit www.nkyhhw.org.

Drop off broken-down appliances, scrap metal, ink/toner cartridges, and used oil/gas at our **Recycling Center.**

Open Monday through Friday, 8:00am to 3:30pm, at 3275 Maplewood Drive, Burlington.



For more information or details on how to properly dispose of an item, please visit www.bigbluebin.com or contact Boone County Solid Waste at 859-334-3151.

Testing for COVID-19

Who can be tested?

Anyone with symptoms associated with COVID-19 (including, but not limited to, fever, cough, difficulty breathing, chills, muscle pain, sore throat, new loss of taste or smell), and/or anyone who has had close contact with someone diagnosed with COVID-19, can call one of the locations listed here to inquire about COVID-19 testing.

What are the types of COVID-19 testing?

Two types of tests are available for COVID-19 — viral tests and antibody tests:

- A viral test tells you if you are currently infected with COVID-19.
- An antibody test tells you if you were previously infected with COVID-19.

An antibody test may not be able to show if you currently have COVID-19, as it can take 1-3 weeks after infection for your body to create antibodies. We do not know yet if having antibodies for COVID-19 can protect someone from getting infected with COVID-19 again, or how long that protection might last.

What can I expect when I get a test for COVID-19?

Viral testing for COVID-19 typically involves inserting a 6-inch long swab (like a long Q-tip) into the cavity between the nose and mouth (nasopharyngeal swab) for 15 seconds and rotating the swab several times. The swabbing is repeated on the other side of the nose to make sure enough material is collected.

Continued on page 9

Testing locations in Northern Kentucky

Drive-Through Testing at Select St. Elizabeth Locations:

St. Elizabeth will be offering drive-through testing on the days/locations listed below. To book an appointment, please visit www.stelizabeth.com/covid-testing.

- **Monday - Friday**
8 am - 2:30 pm
Atlantic Corporate Center
25 Atlantic Avenue
Erlanger, KY 41018
- **Tuesday & Thursday**
5 pm - 9 pm
St. Elizabeth Alexandria Imaging Location
7200 Alexandria Pike
Alexandria, KY 41001

Additional Testing Locations:

St. Elizabeth Physicians Newport/Ft. Thomas Urgent Care

1400 N Grand Ave
Newport, KY 41071
859/905-3070
By Appointment Only, Must see PCP first
Hours: 10 am-8 pm
<https://www.stelizabethphysicians.com/location/details/urgent-care-newport>

St. Elizabeth Physicians Highland Heights Urgent Care

2626 Alexandria Pike
Highland Heights, KY 41076
859/757-0434
By Appointment Only, Must see PCP first
Hours: 10 am-8 pm
<https://www.stelizabethphysicians.com/location/details/urgent-care-highland-heights>

Bluegrass Urgent Care Cold Spring

3699 Alexandria Pike #2
Cold Spring, KY 41076
859/431-7900
By Appointment Only
Hours: By Appointment Only
<http://bluegrassurgentcare.com/locations/>

HealthPoint Family Care Covington

1401 Madison Ave
Covington, KY 41011
859/ 655-6100
Walk-in or Drive-in (By Appointment Only)
Hours: M-F: 8 am-5 pm, Sat: 9 am-5 pm
<http://www.healthpointfc.org/location/covington/>

The Christ Hospital Urgent Care - Fort Wright

1955 Dixie Highway, Suite F
Ft. Wright, KY 41011
859/594-7993
Walk-in
Hours: 9 am-6 pm
<https://www.thechristhospital.com/services/urgent-and-emergency-care/urgent-care/respiratory-care-centers>

Bluegrass Urgent Care Crescent Springs

2327 Buttermilk Crossing
Crescent Springs, KY 41017
859/344-7900
Hours: By Appointment Only
<http://bluegrassurgentcare.com/locations/>

Doctor's Urgent Care

650 Sprucewood Ln
Erlanger, KY 41018
859/ 282-6600
Walk-in, or call for appointment
Hours: 8:30 am-8 pm
<https://www.amcareinc.com/page/erlanger>

Florence Urgent Care

8820 Bankers St
Florence, KY 41042
859/647-9101
Drive-in, call from parking lot
Hours: 2 pm-4 pm
<https://www.florenceurgentcare.com/covid-19-help>

CareFirst Urgent Care

7683 Mall Rd
Florence, KY 41042
859/817-1320
Walk-in
Hours: 8 am-8 pm
<https://carefirsturgentcares.com/>

HealthPoint Family Care Florence

7607 Dixie Highway
Florence, KY 41042
859/655-6100
Walk-in or Drive-in (By Appointment Only)
Hours: M-F: 8 am-5 pm,
Sat: 9 am-5 pm
<http://www.healthpointfc.org/location/florence/>

St. Elizabeth Physicians Florence Urgent Care

8726 US Hwy. 42
Florence, KY 41042
859/ 647-2900
By Appointment Only, Must see PCP first
Hours: 10 am-8 pm
<https://www.stelizabethphysicians.com/location/details/urgent-care-florence>

Bluegrass Urgent Care Independence

2025 Declaration Dr
Independence, KY 41051
859/371-7900
Call from vehicle for instruction
Hours: M-F : 9 am-9 pm,
Sat-Sun: 10 am-7 pm
<http://bluegrassurgentcare.com/locations/>

Bluegrass Urgent Care Walton

625 Chestnut Dr
Walton, KY 41094
859/ 485-7900
Call from vehicle for instruction
Hours: M-F: 9 am-9 pm,
Sat-Sun: 10 am-7 pm
<http://bluegrassurgentcare.com/locations/>

St. Elizabeth Physicians Crittenden Urgent Care

405 Violet Rd
Crittenden, KY 41030
859/903-0268
By Appointment Only, Must see PCP first
Hours: 10 am-8 pm
<https://www.stelizabethphysicians.com/location/details/urgent-care-crittenden>

For an interactive map of testing locations and details for Northern Kentucky, visit <https://bit.ly/2T2Wrvx>. For a list of additional "pop-up" testing locations, please visit <https://nkyhealth.org/individual-or-family/health-alerts/coronavirus/covid-19-testing/>.

Testing for COVID-19, continued from page 8

The swab is then inserted into a container and sent to a lab for testing.

What happens if I test positive for COVID-19?

If you are tested for COVID-19, you will need to stay at home and away from others until you receive your results. If you test positive for COVID-19, you will need to

remain at home away from others and will be contacted by your local health department. The local health department will determine if individuals with whom you have had close contact have been exposed to COVID-19, should monitor for symptoms, and stay at home. Check www.kycovid19.ky.gov for the latest guidance on when to end your home isolation.

Who should be tested for COVID-19?

If you have had close contact with someone who has been diagnosed with or has tested positive for COVID-19, or you have symptoms associated with COVID-19 (including fever, cough, and difficulty breathing), contact your health care provider who can provide further guidance and instructions.

What does it mean if I test negative for COVID-19?

If you test negative for COVID-19 by a viral test, you probably were not infected at the time your sample was collected. However, that does not mean you will not get sick. The test result only means that you did not have COVID-19 at the time of testing.

Can children become infected with COVID-19?

Yes, while children tend to have mild illness and less serious complications, they can still become infected with COVID-19.

What are the symptoms of COVID-19 in children?

Symptoms of COVID-19 in children tend to include cold-like symptoms, such as fever, runny nose and cough. Vomiting and diarrhea have also been reported in children.

How can COVID-19 in children be prevented?

Preventing COVID-19 infection in children is the same as preventing it in adults:

- Wash hands often.
- Cover coughs and sneezes.
- Avoid people who are sick.
- Clean and disinfect high-touch surfaces and objects daily (e.g. door knobs, light switches, remotes, kitchen and bathroom surfaces, etc.).
- Launder items, including washable plush toys, as needed. Follow the manufacturer's instructions. If possible, launder items using the warmest

appropriate setting and dry items completely.

- In situations where it is difficult to maintain social distancing, children ages two years and older should wear a cloth mask.

What should parents do if their child has symptoms associated with COVID-19?

Contact your health care provider, who can provide further instructions, which may include an in-office visit and testing. If your child is diagnosed with COVID-19, everyone in the household will need to stay home.

How can you keep the rest of your family safe if your child has COVID-19?

- Keep your child home.
- Keep other people and pets away from your child as much as possible.
- Try to have only one person care for the sick child so others are not exposed.



illness, including children, get better with rest, fluids and fever-reducing medicine. Some people with more severe symptoms need treatment in the hospital.

What is multisystem inflammatory syndrome in children (MIS-C)?

Multisystem inflammatory syndrome in children (MIS-C) is a rare, but serious complication associated with COVID-19 in children. It is a condition where different body parts become inflamed. Symptoms can include rash; bloodshot eyes; red, swollen hands; red, cracked lips; stomach issues; and joint pain. If your child has a persistent fever, is overly tired, or is not eating or drinking, contact your health care provider immediately.

- If the child is over two years of age and not having difficulty breathing, have the child wear a mask when the caregiver is in the room with them. If this is not possible, the caregiver should wear a mask.
- If possible, have the child use a separate bathroom. If this is not possible, wipe down the bathroom often.
- Clean and disinfect high-touch surfaces and objects daily.
- Wash hands often.

How is COVID-19 treated?

Doctors and researchers are working on medicines and a vaccine for COVID-19. Most people with the

It is important to remember that most children exposed to COVID-19 have no illness or very mild illness.

Boone County Golf Courses

Enjoy great golf at Boone Links and Lassing Pointe



18 Holes Mini Golf

\$5.00

Expires 10-1-19 Valid for foursome
Bring What's Happening for Discount

Boone Links –859/371-7550 • 19 Clubhouse Dr. Florence Ky. 41042

Book online- www.boonecountygolf.com



#1 Public Course in Ky. – 20, 19, 17, 16



18 Holes with Cart

\$47

Bring What's Happening for Discount
Expires 11-1-20 Valid for foursome

Lassing Pointe – 859/ 384-2266 • 2266 Double Eagle Dr. Union Ky. 41091

Boone County Solid Waste Management

Upcoming events

2020 Fall Cleanup:

The on-site cleanup will be changing to a voucher system this year. Please contact Boone County Solid Waste or visit www.bigbluebin.com for more details.

Household Hazardous Waste Collection Event:

Sat., Nov. 7, 9 am-2 pm

- UC Health (Florence Y'all's Stadium at 7950 Freedom Way, Florence, KY 41042)

The chance to recycle your hazardous waste for free is BACK! We partner with Campbell and Kenton Counties, along with several other organizations and vendors, to make this event possible. This event attracts a lot of people — please expect a wait.

Acceptable items: Please visit www.nkyhhw.org for what is accepted and what is not.

Plan ahead! Cut out this form and have it filled out before you come.

HOUSEHOLD WASTE COLLECTION EVENT REGISTRATION FORM

November 7, 2020 9 a.m. – 2 p.m.

City you live in: _____

County you live in: _____

Please place a check in the box next to the type of waste you will be recycling (select all that apply).

- Paint**
(All types – limited to 10 cans per vehicle)
- Hazardous Materials**
(Flammables, combustibles, corrosives, fuel, kerosene, pesticides, aerosol cans, etc.)
- Oil/Antifreeze**
(All types)
- Bulbs**
(4ft. & 8ft. fluorescent tubes, etc.)
- Electronics**
(TVs – limit of 2 per vehicle, computers, DVD players, etc.)
- Propane Tanks**
(20 lbs. only)
- Toner/Ink**
(Color and black and white)
- Batteries**

Please bring this completed form with you to the recycling event.

Waste Tire Amnesty

TBD

Kentucky's Division of Waste Management will host a Waste Tire Amnesty Day in Boone County sometime this fall open to everyone (you do not have to be a resident of Boone County). Get rid of one tire or 40! Stay updated by checking our website or signing up for our newsletter.

Christmas Treecycling

TBD

Recycle your real Christmas trees with us! Stay updated for dates, times, and drop-off locations by checking our website or signing up for our newsletter.

For all other events, visit our website or sign up for our newsletter!

Recycle with the Big Blue Bins

What's accepted in the Big Blue Bins?

The Big Blue Bins were removed back in March. Since then, we have put almost 20 bins back out in the County! Please visit the following locations to recycle your plastic bottles and jugs, glass bottles, metal cans, mixed paper, and cardboard:

- **Farmer's Market**, 1824 Patrick Drive, Burlington, KY 41005 (right beside Burger King and Kroger)
- **Walton Fire Protection District**, 12600 Town Center Drive, Walton, KY 41094 (right behind Kroger)

<h3>RECYCLE ✓</h3> <p>Plastic Bottles Glass Containers Metal Cans</p> 	<h3>AVOID ✗</h3> <p>Styrofoam Other Plastic Items</p> 
<h3>ADD TO 'CARDBOARD ONLY' BIN</h3> <p>Cardboard & Paperboard</p> 	<h3>ADD TO 'PAPER ONLY' BIN</h3> <p>Mixed Paper</p> 
<h3>Organics</h3> 	<h3>Hazardous Waste</h3> 
	<h3>Electronics</h3> 

Plastic bottles and jugs: All plastics with a spout (ex: water bottles, pop bottles, laundry detergent bottles, milk jugs, soap/shampoo bottles, and OJ bottles). No need to remove the labels or lids. All other plastic is not accepted. *No butter tubs, yogurt containers, bags, clamshells, toys, storage bins, or Styrofoam.*

Glass bottles: Food and beverage containers only (ex: pickle jars, spirit bottles, and pasta sauce jars). Remove lids and rinse. All other glass is not accepted. *No glass tabletops, drinking glasses, or mirrors.*

Metal cans: Food and beverage containers only. No need to remove the labels or lids. All other metal can be taken to the Recycling Center during operating hours.

Mixed paper: Includes copy paper, folders, junk mail, notebooks, magazines, phone books, envelopes, and newspapers. Shredded paper is OK.

Cardboard: Includes cardboard with ridges and furrows (ex: shipping boxes) and paperboard (ex: cereal boxes, tissue boxes, toilet paper/paper towel rolls, and packaging paper). *Remove all plastic and Styrofoam from the box.* Please flatten when recycling.

We cannot accept any large items at our bins. This includes – but is not limited to – furniture, mattresses, bed frames, mirrors, TVs, chairs, trampolines, appliances, vacuums, sinks, and more. Please call 859-334-3151 for disposal questions.

Recycling Center

Our Recycling Center, located at 3275 Maplewood Drive in Burlington, is open Monday through Friday (8 am - 3:30 pm) to accept your broken-down appliances (Freon is OK), scrap metal, car batteries, gasoline, and used oil. Do not stop at the office – just head on down to the Recycling Center. For a detailed list of accepted items, visit www.bigbluebin.com.

The Recycler — Want to stay updated? Sign up for our quarterly newsletter, *The Recycler!* We will inform you of upcoming cleanups, volunteer opportunities, programs, and more. Sign up by visiting our website and navigating to our 'Education and Outreach' tab!

Boone County Solid Waste Management

Boone County Solid Waste Team

- **Mike Wilson**, Solid Waste Services Supervisor
859/334-3629; mike.wilson@boonecountyky.org
- **Megan Clere**, Community Outreach Coordinator
859/334-3151; mclere@boonecountyky.org
- **Dennis Gosney**, Recycling Manager
859/334-4808; dgosney@boonecountyky.org

Updates for upcoming cleanup events, litter issues, educational opportunities, burn bans, recycling information, and more can be found on www.bigbluebin.com.

Here to serve you

The Boone County Cooperative Extension Service is here to serve you. Even during the COVID-19 pandemic, we are here, just operating a little differently. We are doing our best to keep our staff and you safe. Class sizes are limited and some programs are being offered online. Watch for our mailings and/or check our website and Facebook for updated information.

Extension Agents are here to answer your questions on a wide variety of topics. Please call ahead to make an appointment. Agents may be working from home, so please leave them a message when you call and they will get back to you.

Free services to citizens

County Extension Agents provide a variety of free services to the residents of Boone County. They work with a variety of groups and organizations to help strengthen the county and improve the lives of its citizens. Our programs are administered through the University of Kentucky and Kentucky State University. We are on call to answer your questions regarding agriculture, consumer and financial education, horticulture, family life, and 4-H Youth Development. We also provide ongoing educational programs and are available as educational speakers at events and meetings.

Family and Consumer Sciences

Family and Consumer Sciences Agents can assist you in all areas of family life, including:

- Parenting and child development
- Housing and environment
- Financial management
- Food, nutrition, and health

- Clothing and textiles
- Cultural awareness



The Extension Homemakers Association is more than you may think. It provides enrichment programs for individuals, families, and communities through educational, social, and community service activities. Membership is open to all residents.

Horticulture

Our Horticulture department offers information and classes on:

- Insect, disease, and weed problems
- Lawns, gardens, orchards, landscapes, and flower beds
- Soil sample analysis
- Composting and mulching
- Pruning and propagating
- Master Gardener volunteer training
- Commercial production of fruits, vegetables, flowers, and nursery crops
- "From the Ground Up" newsletter



The Boone County Arboretum is an educational focal point of natural beauty. This site is the first of its kind in the nation. Walk the tree-lined trails and explore 121 acres of park land with labeled trees and shrubs for year-round enjoyment. Check out their website at www.bcarboretum.org.

Agriculture

Agriculture programs serve both rural and urban communities, ad-

ressing farm business management issues. Discover information on:

- Livestock production
- Crop management
- Specialty crops
- Natural resources
- Home insect control
- Wildlife management
- Pesticide use
- Water quality
- Beekeeping



The Boone County Farmers Market offers high quality vegetables, flowers, fruits, and plants from Boone County growers. The market helps individuals understand the food to table connection.

Natural Resources

Natural Resources programs are designed to address both current and anticipated needs of Extension clientele to promote greater understanding of forest resources, their sustainable management, and utilization. Programs include:

- Biodiversity and ecosystem management

- Forest management and silviculture
- Forestry and environmental education for youth
- Natural resource recreation and tourism
- Urban forestry
- Wildlife damage control and wildlife conservation

4-H Youth Development



4-H, the largest youth organization in the world, is learning by doing projects of all kinds. This

program is available to any Boone County child, ages 9-18. Program topics include:

- Shooting sports and safety
- Aerospace
- Summer and environmental camps
- Art and photography
- Horse, livestock, and small animal projects
- Crochet and sewing
- Gardening and entomology
- Food and nutrition

Boone County Cooperative Extension Service



University of Kentucky
College of Agriculture,
Food and Environment
Cooperative Extension Service

P.O. Box 876 • 6028 Camp Ernst Rd.
Burlington, KY 41005
PH: 859/586-6101 • FAX: 859/586-6107
E-mail: boone.ext@uky.edu
Office Hours: M-F, 8 am-4:30 pm



Disabilities accommodated
with prior notification.

Boone County Conservation District

The mission of the Boone County Conservation District (BCCDKY) is to promote the protection and wise use of natural resources through education and service to the residents of Boone County, Kentucky.

Wildlife monitoring projects

In an effort to better understand the quality of our forest, wetland, and stream habitats, BCCDKY has launched a series of wildlife studies. These studies will help us learn about the diversity of species in our environment and will help inform our forestry habitat plan. In collaboration with the Kentucky Division of Conservation, Kentucky Office of Nature Preserves, and the Boone County Parks Department, we are us-

ing a variety of technologies, including trail cameras, microphones, artificial habitat, and live animal traps



Thomas More University student Joseph Pedro collects data from a White-footed Mouse (*Peromyscus leucopus*) at Boone Cliffs.)

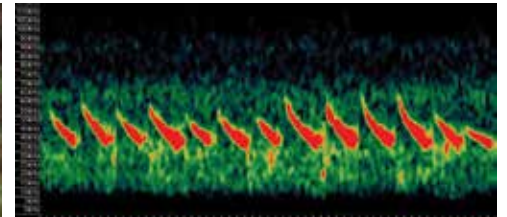
to monitor populations of bats, birds, snakes, small mammals, and frogs. Student researchers from Northern Kentucky University and Thomas More University helped design and implement these projects, which will continue throughout the year.

One way we collect data is with microphones. Using special software, our staff can listen to and analyze sound files visually using images called spectrograms. Spectrograms

show the volume and frequency of the wildlife sounds and can help create a clearer picture of an individual species' call. This summer, thousands of sound files were collected, and so far the data indicates the potential presence of threatened and endangered species, including the Indiana Bat. Stay tuned to our website for updates on all of our wildlife monitoring projects.



Eastern Hognose Snake (*Heterodon platirhinos*) at Conservancy Park



A spectrogram image shows the frequency and volume of an Indiana Bat (*Myotis sodalis*) call, which is federally endangered but suspected to reside in Boone County's forests

Free outdoor programs

Looking for new ways to get outdoors with your family? BCCDKY and Boone County Parks offers free outdoor family programs each month. Join us for an in-person program listed below, or play "Squatchin with Susan" on your own anytime. For more outdoor activities and ideas, visit bccdky.org/at-home-resources.

Outdoor Family Program Schedule

- Sept. 26: Monarch Tagging
- Oct. 10: Birds of Boone County
- Nov. 6: Night Hike
- Dec. 6: Nature Scavenger Hunt
- Jan. 22: Owl Prowl

Conservation education grants available

BCCDKY offers education grants of up to \$1,000 to support conservation education in Boone County schools. If you are a teacher interested

in outdoor classrooms, school gardens, or classroom supplies, let us know! Grant applications are accepted until funds are no longer available.

Scholarships due January 31

College scholarships are also available for Boone County residents enrolled in environmental studies, agriculture, biology, or

another conservation-related field. Scholarship applications are due January 31.

Boone County Conservation District

Contact us!

859/586-7903

info@bccdky.org

6028 Camp Ernst Road

Burlington, KY 41005

Bccdky.org

Follow us!



@bccdky

As part of COVID-19 response, SD1 will see no revenue increase

SD1 is moving forward with year two of a four-year residential sanitary sewer rate restructure without a revenue increase for fiscal year 2021. All other rate classes and fees remain unchanged.

Executive Director Adam Chaney said that while SD1 had anticipated a 5 percent revenue increase this year, the circumstances surrounding

COVID-19 and its impacts on our community made it inappropriate to raise revenues at this time.

In 2019, a majority of the three county fiscal courts approved a new residential sanitary sewer rate structure aimed at aligning sewer rates more closely with the actual cost of providing service. In accordance with the plan, SD1 charges a base rate

for the first 200 cubic feet (HCF) of water treated, and a variable rate for each additional HCF of water treated. Under the 4-year plan, as the base rate increases the variable rate is reduced.

While SD1 will see no revenue increase this year, individual rate payers may still see their bills increase or decrease depending on the total volume of water used. SD1 will also renew its

partnership with the Brighton Center to continue to offer a Customer Assistance Program that helps cover the incremental increase of the base rate for qualifying low-income and fixed-income customers.

For more details about rates and fees for fiscal year 2021, visit <http://www.sd1.org/408/Understanding-Your-Bill>.

SD1 turns to smart-sewer management in fight against Northern Kentucky sewer overflows

SD1 has begun a new era of smart-sewer management in Northern Kentucky that will significantly reduce the cost of complying with federal Clean Water Act regulations.

Beginning with new equalization (EQ) tanks and pump stations along Route 8, which will be used to hold mostly storm water, SD1 will eliminate about 20 million gallons of typical-year sanitary sewer overflows (SSOs), and will do so at a price tag well below what traditional overflow mitigation would cost.

“We’re going to make our sewer system smarter,” said SD1 Executive Director Adam Chaney. “We can no longer afford to simply build bigger and bigger pipes and wait for them to become overwhelmed by larger and larger storms.”

The first step toward smart sewers happens long before any work begins in the field. Working with its Updated Watershed Plan partner, Hazen and Sawyer, SD1 ran thousands of scenarios using artificial intelligence software to accurately predict what will happen throughout Northern Kentucky’s sewer system under various storm simulations.

The results of that work provided a blueprint – which SD1 is calling Clean H2O40 – for the most effective and affordable approach to mitigating sewer overflows. The new EQ will be the first projects constructed under the new Clean H2O40 plan.

The new tanks will ultimately use flow meter technology to signal the sewer system to store excess flow during storm events until downstream capacity is available. Once a storm has passed, the system will gradually release flow back into the pipes for transport to a treatment plant. This will minimize the risk of increased volume overwhelming the system and causing sewer overflows.

Chaney compares the technology to smart traffic lights during rush hour. As more and more cars begin to congest the road, traffic lights can be used strategically to keep things moving. SD1 will apply the same logic to Northern Kentucky’s sewer system, and the new EQ tanks are a step

toward system-wide coordination – storing flow in tanks, pipes and other structures across the region.

“This new strategy is anticipated to significantly lower project costs and associated revenue needs by hundreds of millions of dollars over the next 20 years. In addition to maintaining sewer rate affordability, the reduced overflow mitigation costs will allow SD1 to address system expansion required to support the local economy,” Chaney said.


Under the terms of an amended consent decree with the Commonwealth of Kentucky and the US Environmental Protection Agency,

SD1 must completely eliminate all typical-year sanitary sewer overflows by the year 2040. The system experiences about 115 million gallons of SSOs in a typical year. The agreement also requires SD1 to recapture at least 85 percent of combined sewer overflows by 2040.

“We’re going to use storm water storage in combination with smart sewer management to improve our system today and into the future,” Chaney said. “This new approach, along with the recent nearly 15-year extension on our consent decree deadline, will make it possible for SD1 to mitigate system overflows, improve water quality and public health, and continue supporting the economic vitality of our region without overburdening ratepayers.”

CLEAN H₂O40

SD1



1045 Eaton Drive, Fort Wright, KY 41017
phone: 859/578-7450

Hours of Operation:
Monday-Friday: 8 am-4:30 pm

TANK 2020 Redesign: Progress report

If you are a regular bus rider or simply like to keep up on the improvements to our transit service here's an update on TANK's 2020 Redesign process.

In March and April adjustments were made to the original recommendations based on community feedback. The TANK board of Directors approved a final set of plan recommendations, pending final and formal budget approval by TANK and the three Fiscal Courts of Boone, Campbell and Kenton counties.

To read a summary of the changes as well as a full presentation of the final recommendation visit tankbus.org/learn/2020-system-redesign

Expected outcomes

The final plan represents a massive change to your region's transit system and, once implemented, will provide the following outcomes:

- The number of people within walking distance to frequent transit will increase by 155%
- The number of jobs within walking distance to frequent transit will increase by 58%



To read a summary of the changes as well as a full presentation of the final recommendation visit tankbus.org/learn/2020-system-redesign

- The number of Transportation Disadvantaged individuals within walking distance of frequent transit will increase by 157%
- The number of revenue hours needed to operate the new system will actually decrease by 2.4%

- The number of peak vehicles needed to operate the new system will decrease by 20+%

timetables. Our redesigned service will begin in late December 2020 or early January 2021. For updates you can follow TANK on social media and sign up for rider alerts.

What happens next?

In November be on the lookout for more specifics around routes and

JOIN OUR TEAM OF DEDICATED DRIVERS!

TANK is hiring fixed-route drivers for full-time openings. We are seeking applicants with the talent to communicate, interact and create the best experience for our riders and who strive to provide excellent service to our community.

Preferred applicants have a CDL Permit or License with Class B passenger and air brake. Paid training available. We offer excellent health benefits and paid time off.

To apply visit tankbus.org/connect/careers




Transit Authority of Northern Kentucky

TANK is the public transit authority that provides bus service in Boone, Campbell and Kenton counties and downtown Cincinnati.

Contact us! Phone: 859/331-TANK (8265) • Web: www.tankbus.org

Connect with TANK!

 Facebook TANK (Transit Authority of Northern Kentucky)

 Instagram @tankbus



©2020 All rights reserved. Reproduction in whole or in part without permission is prohibited. WHAT'S HAPPENING!™ is published by Rivertown Communications, www.whatshappeningnews.com. Although all information is believed to be reliable, Rivertown Communications cannot guarantee the accuracy of information presented in this publication. All articles are submitted and approved by participating organizations and do not necessarily represent the views or opinions of the publisher.

Visit www.whatshappeningnews.com for all the news in Boone, Kenton, Campbell and Oldham counties

City of Florence

Annual leaf collection

A sign will be placed at the neighborhood/street entrance the day prior to leaf collection.

The Florence Public Services Department will have the annual Leaf Collection Program from mid-October to mid-December for City of Florence residents. Leaves are treated and used as compost or fertilizer. For more information, contact Public Services at 859/647-5416. Guidelines for collection are:

1. Rake leaves in a row behind the curb. Do not rake into the street. Leaves need to be raked to the

2. curb by 7 am the morning of the scheduled pick-up.
3. Pick-up is on residential streets only. No state routes or commercial streets.
4. Keep all debris and trash out of the leaf row. This includes tree branches.
5. All leaves will be composted. To receive one or more loads of compost call 859/647-5416.
6. Homeowners may also bag leaves for pick-up by Rumpke.
7. The schedule is based upon weather and equipment operation.



City of Florence rentals/ facilities and park shelters

Rentals have resumed operating in accordance with Kentucky Healthy at Work guidelines. For more information or to schedule

a visit, please contact Events Consultant, Victoria Wells at 859/647-5425 or email Victoria.wells@florence-ky.gov.

For the most updated information:

1. Sign up for our e-news mailing list by visiting: florence-ky.gov/enews
2. Check out our website at florence-ky.gov
3. Follow us on Facebook or Twitter



City of Florence



Administration.....	859/647-8177	Public Services.....	859/647-5416
Finance.....	859/647-5413	Rentals.....	859/647-5425
Fire/EMS Administration.....	859/647-5660	Senior Activity Center.....	859/282-4061
Police Administration.....	859/647-5420	Water/Sewer.....	859/647-5413
Police or Fire/EMS (non-emergency)....	859/371-1234	World of Golf.....	859/371-8255