

# WHAT'S *Happening!*

in **Boone County, Kentucky** <sup>TM</sup>



Fall/Winter 2021/22



**PATRIOT DAY REMEMBRANCE  
20TH ANNIVERSARY  
SATURDAY, SEPTEMBER 11, 2021  
5PM @ FLORENCE Y'ALLS STADIUM**

Program Features:

- Patriotic Performance by Northern Kentucky Brotherhood Singers
- Recognition of Boone County's First Responders
- Schaumburg Boomers vs Florence Y'alls Ball Game
- View a Piece of the Twin Towers Building
- Pictorial Timeline of 9/11 Events
- Fireworks by Elite Pyrotechnics
- Musical Performance by Cassette Junkies Band

For more information call (859) 647-5439  
or visit: [www.florence-ky.gov](http://www.florence-ky.gov)





**PATRIOT DAY** WE WILL NEVER FORGET

## CITY OF FLORENCE Upcoming Events

- POOCH FESTIVAL** - Sat., Sept. 11 at the Florence Senior Activity Center, 7431 US 42, Florence. Registration begins at 10 am.
- PATRIOT DAY REMEMBRANCE** - 20th Anniversary - Commemoration of 9/11 to be held Sat., Sept. 11. Collecting donations of canned goods including spaghetti, ravioli, and fruit cups for Go Pantry at the event.
- FALL CLEANUP PROGRAM** - Annual Fall Cleanup Program for City residents, Oct. 11-17.
- ANNUAL LEAF COLLECTION** - The Florence Public Services Department will hold their annual Leaf Collection Program from Mid-October to mid-December for City residents.
- HALLOWEEN NIGHT OUT** - Tues., Oct. 26.
- VETERAN'S DAY PROGRAM** - Thurs., Nov. 11 at 6 pm
- CHRISTMAS TREE LIGHTING** - Tues. Dec. 7 at 6 pm at the Florence Government Center
- Additional information regarding the scheduled events, other upcoming events within the City, services provided by the City, as well as council meetings, contacts, and other useful information, visit our website at [Florence-ky.gov](http://Florence-ky.gov).

### In this issue:

BC Alliance: 14	BC Golf Courses: 10	BC Solid Waste Mgmt.: 6-7	St. Elizabeth Healthcare: 3
BC Conservation District: 16	BC Parks & Recreation: 9	Brighton Center: 15	Sanitation District 1: 11
BC Cooperative Extension: 12	BC Public Library: 2	City of Florence: 1	TANK: 13
BC Fiscal Court: 7-10	BC Schools: 5-6	NKY Health Department: 4	

# Report to the Community Fiscal Year 2020-2021 (July 20 to June 21)

Leading the Library through a pandemic which has changed the world is not something I trained to do. But remaining committed to our community, we tackled it as an opportunity to reset by evaluating services, programs, and facilities to determine what was working, needed to be added, changed, updated or ended.

Here is a timeline summary of ways the Library adapted to meet the changing needs of our community during the Pandemic.

- **Fines** are temporarily eliminated, following the eviction moratorium. (*through October 3, 2021*)
- **Virtual Programming** allows the Library to offer a wide range of informative, cultural, and historical educational opportunities to learners of all ages and backgrounds from the comfort of home. (*summer 2020*)
- **Book Bundles** offers a personalized reading list for children, teens, and their families. (*summer 2020*)
- **Homeschool Collections** is a bundle of children's books and media to supplement the homeschool curriculum. (*August 2020*)
- **Student Digital Access (SDA) cards** were made available to every middle and high school student in Boone County Schools. The card gives students access to the Library's Digital resources without fines and does not expire until graduation from the school district. 11,084 Boone County students have SDA cards. (*August 2020*)
- **1,000 Books Before Kindergarten** is an initiative that prepares children for starting

school with an achievable goal. The child earns milestone badges along the way as well as a certificate and a picture with Tales the Library Dragon upon completion. (*January 2021*)



- **Wide-Area Mesh Network** was created to get Wi-Fi to households in the community that do not have an internet connection. The Library bolstered the Wi-Fi signal surrounding our six locations and installed a Wi-Fi access point at the historic Firehouse along with a fiber optic internet line to now reach 200 households in the Florence area. Wi-Fi usage increased by 82% through this partnership with the City of Florence. (*February 2021*)

**Circulation increased -** Circulation of physical materials increased by 9% over last fiscal year. The eMaterial check outs increased by 261%. We are yet to determine if the increase in eMaterial usage is permanent or temporary due to the pandemic.

**Library's mission: Discover Explore Experience a lifetime of learning.** BCPL matches our programs with the Institute of Museum and Library Services' 21st century skills as part of our effort to support education in Boone County for all ages and all stages of life. The ability to live

and work depends on utilizing 21st century skills.

- **Adult Lifelong Learning** - New skills are important because cognitive abilities continue to develop after they leave formal education. For older adults, educational activities increase the brain's ability to compensate for age-related changes, and social interaction is an important predictor of healthy brain aging.
- **Youth Lifelong Learning** - BCPL supports children's intellectual, social, emotional, and physical development by designing learning environments, experiences, and materials that encourage family involvement and complement and enrich academic content.

**BCPL's Master Plan** - In January 2020, the Library signed a contract with MSR Design to conduct


a Facilities Master planning process. MSR designed and conducted a process to engage community leaders and stakeholder, conducted a demographic analysis, evaluated existing library facilities to create a vision for future library services as part of a 20 year plan. Five projects were recommended by the plan in order of priority as outlined below.

**Our Community** - All this work and more is supported by local tax dollars. In FY2021, for every one dollar in taxes, the citizens of Boone County received approximately \$6.75 in value. What does the Library cost you? You pay 4.9 cents for every one hundred dollars of your property's value, in taxes to the Library. **Utilize the Library you've already paid for! We are so much more than books.**

*Carrie Herrmann*  
Director

**Master Plan Projects in Priority Order**

1. Move the Walton Branch closer to 75 (land already purchased) and make larger to accommodate the anticipated growth in the Walton area.
2. Add 4,000 square feet and remodel the interior of the Florence Branch.
3. Renovate the Main Library.
4. Add 5,000 square feet and remodel the interior of the Scheben Branch.
5. Review the Hebron Branch usage for future remodel or expansion, if needed.



**Boone County Public Library**



**Six locations to serve you!**  
**One phone number:**  
**859/342-BOOK (2665)**

# St. Elizabeth enhances access to cardiac care with multi-specialty outpatient building

St. Elizabeth Healthcare is increasing access to quality cardiac care with system-wide enhancements to the Heart & Vascular Institute (HVI), including the construction of a new, 67,000-square-foot facility in Edgewood and expansions to the Ft. Thomas and Florence facilities. Expected to be completed in November 2021, the new HVI building in Edgewood will bring more than 30 multi-specialty physicians and 30 advanced practice providers to one, centralized location.

“We opened the Heart & Vascular Institute six years ago with the goal of improving access to quality cardiovascular care for individuals in our region,

and since then, we’ve made impressive strides in service offerings and patient outcomes,” said D.P. Suresh, MD, Cardiologist and Executive Medical Director of the St. Elizabeth HVI.

When the HVI opened in 2015, St. Elizabeth set a goal to work with the community to decrease heart-related deaths 25 percent by 2025, coining the phrase “25 by 25.” At the end of 2020, the System reported a 12.57 percent decrease, based on the most recently available data from the Centers for Disease Control, tracking on target to meet the goal.

Over the last six years, St. Elizabeth has added specialists in

every field of heart care and adopted leading-edge technology, including pacemakers small enough to fit inside the heart, heart valves that can be replaced without open heart surgery and implantable heart pumps that extend life for patients with heart failure. St. Elizabeth also achieved accreditation as a Cardiovascular Center of Excellence from the American Heart Association, and is the only hospital in Greater Cincinnati to hold this distinction.

To provide exceptional care all under one roof, the new HVI facility in Edgewood will include the following medical specialists and services:

- Cardiology
- Cardiac electrophysiology
- Cardiac surgery
- Cardiac rehabilitation
- Outpatient cath lab
- Advanced Heart Failure Management Center
- Structural Heart and Valve Center
- Cardiac diagnostic services
- Cardiovascular Genetics
- Cardiac Clinical Trials
- On-site lab

For more information on St. Elizabeth Heart & Vascular Institute and our commitment to cardiac care, visit [stelizabeth.com/heart](http://stelizabeth.com/heart).

## St. Elizabeth Physicians launches new NURSE NOW Helpline for after-hours medical advice

We have all been there before: it is the middle of the night or the weekend and you have hurt yourself or your child is not feeling well, and you do not know whether to seek emergency care immediately or to wait and see. From a high fever to a possible broken bone to a potential concussion, it can be difficult to evaluate how urgent the situation is and whether a visit to the emergency room or an urgent care is necessary. If only you had an expert to call to give you some guidance.

This type of question inspired St. Elizabeth Physicians to launch our new NURSE NOW helpline. Available to anyone and everyone in the community after business hours and on the weekends, simply call 888-4STE-NOW free-of-charge and a registered nurse trained to assess your needs over the phone will help determine the severity of the situation and advise you on next steps.

“The nurse can help you decide if the health concern requires immediate medical care or if it’s okay to

wait and see your provider,” says Sara Browne, Manager of Virtual Health at St. Elizabeth Physicians. “If an appointment is necessary the nurse can even schedule you for a virtual visit or in-person appointment while you are on the phone.”

The NURSE NOW helpline is available for all types of medical questions and concerns, including:

- Does my child need stitches?
- What type of doctor should I see for this problem?

- What is the correct dosage for this medication?
- When is a fever too high?
- Should I be concerned about this rash?

Our nursing team can also consult with an on-call provider if additional expertise is needed.

In the event of a life-threatening condition or emergency, call 9-1-1. The NURSE NOW program is not meant to replace your healthcare provider or provide life-saving support.

### St. Elizabeth Healthcare



**St. Elizabeth Covington**  
1500 James Simpson, Jr. Way  
Covington, KY 41011  
859/655-8800

**St. Elizabeth Dearborn**  
600 Wilson Creek Road  
Lawrenceburg, IN 47025  
812/537-1010

**St. Elizabeth Edgewood**  
1 Medical Village Dr.  
Edgewood, KY 41017  
859/301-2000

**St. Elizabeth Florence**  
4900 Houston Rd.  
Florence, KY 41042  
859/212-5200

**St. Elizabeth Ft. Thomas**  
85 North Grand Ave.  
Ft. Thomas, KY 41075  
859/572-3100

**St. Elizabeth Grant**  
238 Barnes Rd.  
Williamstown, KY 41097  
859/824-8240

# COVID-19 vaccine for children and teens

*The Centers for Disease Control and Prevention (CDC) recommends vaccination for everyone 12 years and older to help protect against COVID-19.*

## Why does my child need a COVID-19 vaccine?

COVID-19 vaccines help protect kids from getting COVID-19. Getting a COVID-19 vaccine will also help keep them from getting seriously ill even if they do get COVID-19.

## When should my child be vaccinated?

All children who are 12 years and older should get a COVID-19 vaccine. If your child hasn't gotten their vaccine yet, talk to their doctor about getting it as soon as possible.

## Are COVID-19 vaccines safe for my child?

Yes. COVID-19 vaccination provides safe and effective protection against the virus that causes COVID-19. COVID-19 vaccines have been used under the most intensive safety monitoring in U.S. history.

The Pfizer-BioNTech COVID-19 vaccine is now available for everyone ages 12 years and older. The clinical trial showed that the Pfizer-BioNTech vaccine was 100% effective at preventing COVID-19 with symptoms in children 12 through 15 years old. In addition, children's immune systems responded to the vaccine in a way



similar to that of older teens and young adults. To get the most protection, your child will need 2 shots given 3 weeks (21 days) apart.

## Can my child get a COVID-19 vaccine during the same visit with other vaccines?

Yes. Your child can get a COVID-19 vaccine and other vaccines at the same visit. Experience with other vaccines has shown that the way our bodies develop protection after getting vaccinated (immune response) and possible side effects of vaccines are generally the same when given

alone or with other vaccines. Talk with your healthcare provider to learn more.

## Who is paying for COVID-19 vaccines?

The federal government is providing COVID-19 vaccines free of charge to all people living in the United States, regardless of their immigration or health insurance status. COVID-19 vaccination providers cannot:

- Charge you for the vaccine
- Charge you directly for any administration fees, copays, or coinsurance

- Deny vaccination to anyone who does not have health insurance coverage, is underinsured, or is out of network
- Charge an office visit or other fee to the recipient if the only service provided is a COVID-19 vaccination
- Require additional services in order for a person to receive a COVID-19 vaccine

Schedule your child's FREE COVID-19 vaccine today by contacting the Kenton County Health Center at 859/431-3345.

Source: <https://www.cdc.gov/coronavirus/2019-ncov/vaccines/recommendations/adolescents.html>

## NKY Health



### Boone County Health Center

7505 Burlington Pike, Florence, KY 41042  
phone: 859/363-2060

### District Office

8001 Veterans Memorial Drive, Florence, KY 41042  
phone: 859/341-4264

### FOLLOW US!

- [www.facebook.com/nkyhealth/](https://www.facebook.com/nkyhealth/)
- [@nkyhealth](https://twitter.com/nkyhealth)
- [www.instagram.com/nkyhealthdept/](https://www.instagram.com/nkyhealthdept/)

# A Boone County Schools invitation: Come As You Are

The Boone County School District's role is to create a welcoming, inclusive environment that supports and respects all students. Our only agenda is to provide a safe place where all students feel valued, respected, heard and cared for. It is our belief that this groundwork must first be laid for students to have their best learning experiences. We don't have a religious mission or social agenda and we don't promote political groups or agendas. Boone County Schools respect the role of parents and believe it is their job to teach their children their family's personal, political, spiritual and social values.

Our role is to ensure we meet the academic needs of students and prepare them for future success. We serve more than 20,000 students and we provide many different services and options to best serve all of our students.

Diversity, equity and inclusion initiatives are the norm in almost all colleges and businesses. We are required by law to submit a plan annually as part of our school improvement plan with a cultural competency component to increase educational opportunities for all students.

This is how we define these terms:

- **Diversity**—acknowledging and respecting the ways in which our many differences bring value to Boone County Schools.
- **Equity**—making sure all students and staff have exactly what they need to succeed. “When I was a child, everyone sat at right-handed desks, that’s equality. Equity is giving all students desks fit for right and



left handed so that they can be successful. It’s equity of opportunity not equity of outcome.”

- **Inclusion**—including all. We want every single student to feel valued, respected and heard.
- **Social Emotional Learning (SEL)**— soft skills . . . sharing overcoming obstacles, working with others, collaborating, developing communication skills, building self-confidence, managing emotions, community service. We continually hear from businesses that their employees need these skills.

## We are more diverse than you may realize

- Ethnically we are (78.9%) Caucasian, (5.2%) Black, (8.8%) Latino, (2.2%) Asian and various other ethnicities and nationalities make up about (.04%).
- Low socioeconomic students (39%)

- Students with physical/emotional/learning disabilities (17.8%)
- Academically gifted students (12.05%)
- Many students receiving mental health services
- Students of other nationalities/ethnicities learning English (4.2%)
- More than 60 different languages spoken

When we say diversity we not only mean race but student groups like low socioeconomic students, stu-

dents with physical and emotional learning disabilities, the academically gifted and talented students, students receiving mental health services, students of other nationalities and ethnicities learning English. We have over 2400 students with more than 70 home languages spoken. We also teach students who come from a variety of different religious beliefs, sexual orientation, differing learning styles and more. We accept every student as they are and we help them develop into their best selves.

## Some of the questions you may be asking:

- Do you teach Critical Race Theory (CRT)? Are you planning to teach it? No.
- Are you dividing students racially? No. We respect that students may gather however they wish. Groups do not require or exclude students.
- Isn't "equity" promoting Marxist/Socialist/Communist politics? Not how we define it. We don't teach equity, we provide an equitable environment for all kids to get what they need.

*Continued on page 6*



# Boone County Schools

## A Boone County Schools invitation: Come As You Are, continued from page 5

- Are DEI and SEL replacing core academic learning time for subjects like math, science, etc.? No.
- Are you teaching that all white people are racist? No.
- How can I know more about what my child is learning? Your child's teachers are their first resource. They are happy to answer any questions that you have. We also have Principals and district academic leaders that may answer any questions that may arise.

decorate our physical environments to celebrate diversity. We provide ongoing Diversity, Equity and Inclusion and Social and Emotional Learning training for staff so that we can best serve all of our students. We offer several clubs, teams, and organizations. Many are student initiated which gives them a sense of belonging. We provide many different classes in our high schools. A large percent of those are electives from which students may choose.



We support student's basic needs. Whether they need food or clothing. We provide physical and mental health services. We offer special education and gifted services. We actively watch for and address hate speech, bullying and harassment. We

**Our foundational commitment is to encourage and inspire our students through education to become contributing citizens of the world. We celebrate our diversity. We reject hate. We strive for equity. We reject unfairness. We are inclusive. We reject division. We believe in the strong character that unites our students, employees and the community. These core beliefs are central to Boone County Schools achieving excellence together.**

## Boone County Solid Waste Management

# Household Hazardous Waste Collection Event

Have hazardous waste to get rid of? We can help! The 12th Annual Household Hazardous Waste Collection will be held on **Saturday, November 6, 9 am-2 pm, at the Florence Y'all's Baseball Stadium (7950 Freedom Way, Florence).** You must be a Boone, Kenton, or Campbell County resident to participate – no businesses.

In 2020, almost 3,000 residents brought us 293,510 pounds of hazardous waste. Thank you for diverting this waste to the landfill!

### Items Accepted:

- Aerosol cans
- Antifreeze
- Batteries
- Corrosives/Flammables (fuel, gasoline, etc.)

- Electronics (computers, monitors, printers, cell phones, keyboards, etc.)
- Ink/Toner cartridges
- Light bulbs
- Oil
- Paint – limit of 10 cans
- Pesticides – limit of 2 gallons/ liquid OR 2 pounds/powder
- Tanks and cylinders
- TVs – limit of 2 TVs

**We cannot accept appliances, fertilizer, mercury-containing devices, medications, or tires at this event. Paper is no longer accepted.**

For more information, please contact Boone County Solid Waste at 859/334-3151.

### HOUSEHOLD HAZARDOUS WASTE COLLECTION EVENT REGISTRATION FORM November 6, 2021 9 a.m. – 2 p.m.

City you live in: \_\_\_\_\_  
County you live in:  Boone  Campbell  Kenton

Place a check in the box next to the type of waste you will be recycling (select all that apply).

- Batteries**  
(auto, rechargeable, single-use, etc.)
- Bulbs**  
(fluorescent tubes, etc.)
- Cylinders/Tanks**  
(propane tank, fire extinguisher, helium, acetylene, and oxygen cylinders)
- Electronics**  
(computers, DVD players, TVs, etc.; Limit of 2 TVs per vehicle)
- Hazardous Materials**  
(flammables, combustibles, corrosives, fuel, kerosene, aerosol cans, pesticides, etc.)
- Oil/Antifreeze**  
(all types)
- Paint**  
(all types; Limit of 10 cans per vehicle)
- Toner/Ink Cartridges**

Please bring this completed form with you to the recycling event.  
UC Health Stadium, 7950 Freedom Way, Florence, KY 41042

## Household waste vouchers

Household waste vouchers are available for Boone County residents at this time. Vouchers will cover one truckload or one 8-ft trailer load of everyday junk to Bavarian Waste Landfill for free. Residents may receive one voucher per month per household.

Vouchers are currently available upon receipt until December 31, 2021. Guidelines and restrictions do apply — please visit [www.boonecountyky.org/voucher](http://www.boonecountyky.org/voucher) for more information and how to get one.

## Waste Tire Collection Event

Boone County Solid Waste will be hosting a Waste Tire Collection Event on October 1, between 8 am and 5 pm, and October 2, between 8 am and Noon at the Boone County Recycling Center (3275 Maplewood Drive, Burlington). You must be a Boone County resident to participate

— no businesses, scrap yards, recycling centers, or tire retailers.

This event is FREE disposal of truck, passenger, farm implement, ATV, tractor, lawn, bicycle, and golf cart tires. **Limit of FOUR tires per household. Rims are OK.**

## Community Cleanups

Boone County Solid Waste and the Boone County Conservation District are continuing partnership of community cleanups in our local parks and roadways. Join us for the last two cleanups of the year:

- September 25, 9 am - Noon  
Lower River Road, Rabbit Hash
- October 2, 9 am - Noon  
The Knot Marine  
4895 Beaver Road, Union



## Paper Shredding Days

Get your paper shredded with Solid Waste! **Please register for a time slot at [www.bigbluebin.com](http://www.bigbluebin.com) under 'Events'**. This service is for Boone County residents only.

Paper Shredding Days are held at the Boone County Recycling Center (3275 Maplewood Drive, Burlington).

- September 25, 8 am-Noon
- December 18, 8 am-Noon

## Treecycling and holiday lights recycling

Recycle your natural Christmas trees starting December 26, 2021, through January 8, 2022. Please remove all tinsel, ornaments, ribbons, lights, and bags before drop off. All trees will be mulched.

- Boone County Extension  
Enrichment Center – 1824  
Patrick Drive, Burlington
- Stringtown Park (near Boone County High School) – 7340  
Burlington Pike, Florence
- Union Park – 10165 Old Union  
Road, Union
- Walton Park (by the back ball-  
fields) – 35 Old Stephenson Mill  
Road, Walton
- Lakeside Christian Church  
(Hebron Campus) – 1980 North  
Bend Road, Hebron

## Big Blue Bin update

The Big Blue Bins are slowly returning to all original locations! Please visit [www.bigbluebin.com](http://www.bigbluebin.com) for current locations to recycle the following:

- **Plastic bottles/jugs** – all plastics with a spout; includes water bottles, milk jugs, detergent bottles, and soap bottles
- **Glass bottles/jars** – food and beverage containers only; includes pop bottles and spirits bottles
- **Metal cans** – food and beverage containers only; includes pop cans and tuna cans
- **Mixed paper** – includes copy paper, folders, junk mail, notebooks, magazines, phone books, envelopes, newspapers, and shredded paper
- **Cardboard** – includes cardboard boxes and paperboard (think cereal boxes and paper towel rolls)



## Boone County Solid Waste Management

### Boone County Solid Waste Team

- **Mike Wilson**, Solid Waste Services Supervisor  
859/334-3629; [mike.wilson@boonecountyky.org](mailto:mike.wilson@boonecountyky.org)
- **Megan Clere**, Community Outreach Coordinator  
859/334-3151; [mclere@boonecountyky.org](mailto:mclere@boonecountyky.org)
- **Dennis Gosney**, Recycling Operations Manager  
859/334-4808; [dgosney@boonecountyky.org](mailto:dgosney@boonecountyky.org)

Sign up for our newsletter, *The Recycler*, online! Updates for upcoming cleanup events, litter issues, educational opportunities, burn bans, recycling information, and more can be found on [www.bigbluebin.com](http://www.bigbluebin.com).

# Boone County Fiscal Court, Cincinnati Bell partner to offer county-wide high-speed Internet

The Boone County Fiscal Court approved a partnership with Cincinnati Bell Inc. on March 23 that will result in the development of a one-gigabit high-speed broadband fiber network available to every address in the County. This robust fiber network will be deployed within an accelerated 24-36 month time frame.

As access to reliable high-speed Internet has become an essential public service for residents and businesses to address work-from-home, virtual learning, telemedicine and many other essential daily activities, this partnership will ensure no areas of our county are left behind and will improve the quality of life for Boone County citizens now and into the future. The Boone County Fiscal

Court's commitment of \$13.6 million will leverage a Cincinnati Bell investment of more than \$30 million to implement the project.

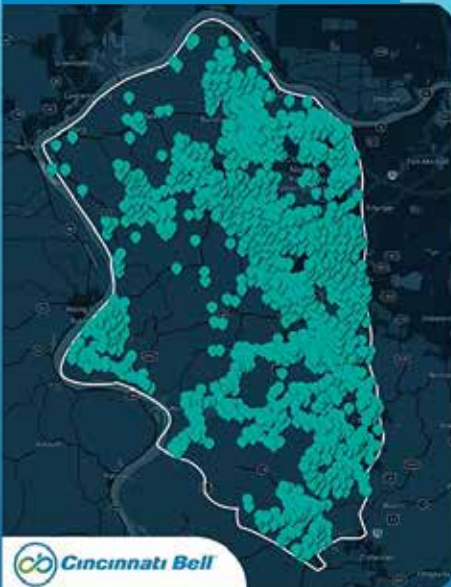
The broadband expansion will place Boone County at the technological forefront as one of the very first county governments in the nation to deliver access to one-gigabit high-speed broadband service to every address in its jurisdiction. A distinctive element of this project will include a last-mile, complete fiber build-out, capable of delivering speeds of one gigabyte. This access will be delivered via a state-of-the-art "Fiber to the Premise" network (FTTP).

"Delivering access for every address in the County to high-speed service is critical in creating



Left to right: Commissioner Cathy Flaig, Judge/Executive Gary Moore, Commissioner Jess Brewer, Cincinnati Bell COO Tom Simpson, County Administrator Jeff Earlywine, and Assistant County Administrator Matthew Webster pose for a photo of the contract signing between Boone County Fiscal Court and Cincinnati Bell.

Boone County - Qualified Fiber Locations Today



Boone County - Non-Qualified Fiber Locations Today



Boone County - Qualified Fiber Locations Future



## CINCINNATI BELL – FIBER LOCATIONS



## Boone County Fiscal Court, Cincinnati Bell partner to offer county-wide high-speed Internet, CONTINUED

a high quality of life environment and positioning our county as a community of choice for residents and businesses,” said Boone County Judge/Executive Gary Moore. “The partnership with Cincinnati Bell will leverage significant private capital investment that would not have been made without the commitment of the Fiscal Court, solidifying our position at the forefront of economic development, innovation and focusing on the needs of our citizens.”

Under terms of the partnership:

- Cincinnati Bell will expand its fiber network and offer one gigabit Internet service to every address in the County, expanding to more than 40,000 currently unserved and underserved business and consumer addresses.

These consumer addresses will include both single-family residents as well as multi-dwelling units.

- The service will be delivered under a “Fiber First” strategy that is committed to utilizing a “Fiber to the Premise” network design, ostensibly installing fiber optic cable along every mile of road right-of-way within Boone County. The fiber backbone will be designed to ensure capacity that will serve all future development, and technology upgrades.
- Cincinnati Bell will offer a Boone County Affinity Internet Package to every Boone County resident.
- UniCity, Cincinnati Bell’s Smart City organization, will fund \$500,000 worth of improvements

to Boone County’s public Wi-Fi infrastructure. UniCity works with communities to leverage technology applications that support business district vibrancy, neighborhood-based enhancements and public safety.

- Qualified K-12 students in Boone County will have access to discounted pricing programs for home-based Internet as well as other subsidized broadband programs based on availability.

Cincinnati Bell has a long history and progressive experience in providing and managing large and complex wireline and wireless projects. As the leading supplier of fiber-based services in Greater Cincinnati and Northern Kentucky, Cincinnati Bell has invested more than \$1 bil-

lion since 2010 into building a fiber network across the region.

The Boone County initiative furthers the company’s goal to find creative solutions toward providing high-quality fiber connections to all, particularly with respect to those who are unserved and under-served.

“Internet connectivity is mission-critical to access jobs, educational opportunities, and health-care resources,” said Tom Simpson, Chief Operating Officer of Cincinnati Bell. “We are excited about this partnership with Boone County, and appreciate the Fiscal Court’s leadership in support of digital equity and equal access to high-speed broadband Internet.”

## What's happening at the Boone County Parks Department

2021 has been a busy and exciting year at Parks. The replacement of shelters at Central Park and England Idlewild Park was just the beginning. The future holds four new lighted pickleball courts at Central Park, a new shelter at Shor Lake Park, an additional shelter at England Idlewild Park and the replacement of the shelter at the Petersburg Community Center and Park.

For those who are not familiar with pickleball, it was invented in 1965 on Bainbridge Island. Three fathers: Joel Pritchard, Bill Bell, and Barney McCallum, whose kids were bored with their usual summertime activities, are credited for creating the game. Pickleball has evolved into a popular sport throughout the US and Canada. The game is growing internationally as well. Judge Executive Gary Moore is excited to provide

our residents in Boone County with more opportunities to play pickleball in our parks.

Visit our website at [www.boone-countyky.org/parks](http://www.boone-countyky.org/parks) for information

on all of our parks and programs. We also update our Facebook page regularly. “Like” us at Boone County Parks.



*This shelter is located at England Idlewild Park in Burlington.*

### Boone County Parks

**5958 Garrard Street  
Burlington, KY  
41005**

**859/334-2117**

**[www.boonecountyky.org/parks](http://www.boonecountyky.org/parks)**



**Visit the Boone County Parks website and our Facebook page for updates and news!**

# New at the Boone Links Golf and Event Center

The next time you visit the Boone Links Golf and Event Center you won't even recognize it. The new clubhouse is a must see! The gorgeous dining room seats 240 guests, has a beautiful stone fireplace and features panoramic views of the golf course. It's a great wedding reception venue with a separate bridal suite, enhanced dining menu, and ample parking! It is A/V equipped for meetings or retreats.

In addition, there are two HD Golf simulator lounges with 30+ championship courses, beautiful outdoor spaces, an 18-hole mini golf course, and new cart paths on all 27 of our championship holes rated 4 stars by *Golf Digest*.

This is the perfect setting for your special event! We look forward to being a part of your perfect day.



## Check out MiniGolf at Boone Links!

One of our newest additions is our 18-hole miniature golf course. Located on the backside of the clubhouse, the new course features a front nine that is handicap/wheelchair accessible while the back nine has numerous water features, bridges and ball chutes. Come check out this awesome new feature here at the Boone Links Golf and Event Center!

### Prices per 18-hole round:

Adults (13 and over) - \$7.50

Kids (12 and under) - \$5



Boone Links – (859) 371-7550

19 Clubhouse Dr. Florence Ky. 41042

[www.boonecountygolf.com](http://www.boonecountygolf.com)



# SD1 lowers storm water rates, enters third year of wastewater rate realignment

SD1 has lowered storm water rates for fiscal year 2022 while moving forward with the third year of a four-year sanitary sewer rate realignment.

SD1 Executive Director Adam Chaney noted that SD1 has taken significant steps to reduce the costs associated with both storm water and wastewater management. “We keep customers at the center of every spending decision,” Chaney said. “And a number of cost-cutting measures implemented over the past several years have allowed us to become much more efficient with ratepayer dollars.”

The monthly storm water fee for residential customers will decrease by 10 percent, from \$5.04 to \$4.454 beginning in July, and the utility will move forward with year three of a

sanitary sewer rate realignment aimed at limiting the effects of declining water usage on SD1 revenues and aligning sewer rates more closely with the actual cost of providing service.

In accordance with a plan approved by the county fiscal courts in 2019, SD1 charges a base rate for the first 2 hundred cubic feet (HCF) of wastewater treated and a variable rate for each additional HCF of wastewater treated. Under the four-year plan, as the base rate increases, the variable rate decreases.

In July, the base rate will increase from \$19 to \$23 per month and the environmental surcharge, which helps fund SD1’s Clean H2O40 amended consent decree sewer overflow mitigation program, will increase from \$6 per month to \$7 per month.



The variable rate will decrease from \$6.05 to \$5.24 per HCF. The sanitary sewer rate realignment is anticipated to result in a five percent revenue increase needed to fund the obligations of SD1’s nearly \$1 billion long-term capital program.

Depending on the total volume of water used, individual sanitary sewer

ratepayers may see their bills increase or decrease, while all storm water customers will see their storm water bills go down beginning with the August bill.

For more details about rates and fees for fiscal year 2022, visit <http://www.sd1.org/408/Understanding-Your-Bill>.

## Understanding the risks of storm water inlet structures

SD1 is encouraging local residents to avoid storm water inlet structures across the region.

A storm water inlet is any device that admits surface waters into the storm water drainage system. Most people are familiar with inlets in curbs and roads – these tend to be small and connect to storm water pipes that are generally smaller in diameter than a manhole cover. Inlets that are smaller than 24 inches in diameter usually have grates associated with them.

But there are other less noticeable inlets that are much larger. These inlets take storm water away from large surface areas and are usually located away from roadways, so people might be less familiar with them. Most of the time, these inlet structure have little to do, but when rains fall, they carry water away, making them critical in the effort to control overland flooding.

“SD1 is being proactive about the risks associated with storm water inlet structures because part of our mission is to protect public health,” said SD1 Executive Director Adam Chaney. “These structures play an important role in storm water management, and we want to make sure that Northern Kentucky families have the information they need to be safe during and after rainfalls.”

Chaney said that maintenance of these inlets is very important – if debris blocks an inlet, it can stop the flow of water, which can cause flooding. With larger inlets, the flow can become strong enough to carry away a person or even a vehicle. During rainfall, never walk, play or drive near storm water inlets.

SD1 emphasizes three simple steps everyone can take to help keep their family and their community safe during and after heavy rainfalls.

1. Keep storm water inlets clear of things like trash, grass clippings, leaves and branches.
2. During rainfall, never walk, play or drive into flooding areas or near storm water inlets.
3. Be aware of severe weather warnings and watches. Take them seriously and familiarize yourself with your neighborhood so that you know where the risks are during severe weather.



SD1



1045 Eaton Drive  
Fort Wright, KY 41017  
phone: 859/578-7450

### Hours of Operation:

Monday-Friday  
8 am - 4:30 pm  
[www.sd1.org](http://www.sd1.org)

# Boone County Extension Homemakers serve our community

When you hear or read the word “homemaker” you may think of someone who stays at home to cook, clean, and take care of the children. That image and idea is no longer accurate. “Homemakers” are vibrant individuals of all backgrounds who fulfill any number of roles in the family and community.

The members of Boone County Extension Homemakers Association have been serving the local community for more than 80 years. Members are interested in life-long learning, serving the community, and building relationships with others. They work to help extend the reach of the family and consumer sciences department of the Boone County Cooperative Extension Service. Cooperative Extension is the outreach arm of the University of Kentucky College of Agriculture, Food and Environment.

There are six active clubs in the Boone County organization. Club members generally gather monthly to share information, build bonds and relationships, and work on projects and activities. Projects and activities

might include collecting needed supplies for local classrooms, organizations or food pantries, participating in educational programs, creating quilted items for donation, or working on a project suggested or led by a member. Some clubs meet during the daytime while others meet in the evening. Members develop and learn leadership skills by serving as club or county officers or committee chairs or leading special projects.

Some members are unable to commit to being in an organized club and join the organization as “mailbox members.” They receive the newsletter and educational materials in the mail, and join in organized classes or activities as their time and schedules allow.

One major annual program is the cultural arts and heritage skills competition. Members enter their items for judging in any of the more than 100 categories. Those receiving blue ribbons in the local competition compete at the area level. Blue ribbon winners at the area level advance to the annual state competition. This



*Above: Learning to embroider, a heritage skill. Right: Raising money for the Boone County Extension Homemaker's Mary Hood Lutes Scholarship by selling pizza kits*



year's local competition will be held on September 28 and will also feature art and craft classes.

Additionally, the group hosts an annual “international program” featuring a culture or country, offers college scholarships and participates in the local and state Extension Homemakers programs and efforts.

Membership in the association is open to all. Dues are just \$8 a year. If you are interested in joining this active group of community supporters or attending the art and craft classes or viewing the items entered in the cultural arts competition, contact the Boone County Extension office (859/586-6101) for details.

## Mental health first aid training

The importance of individual's mental health has recently come to the forefront. Adults from all walks of life can benefit by learning how to help others who may be challenged.

Mental Health First Aid is an 8-hour skills-based training course that teaches participants about mental health and substance-use issues. This training gives you the skills you need to reach out and provide initial support to someone who may be developing a mental health or substance-use problem and help connect them to the

appropriate care. Register to attend this valuable training program by calling 859/586-6101. The training will be held on September 21 and 22 from 10 am to 3 pm at the Boone County Extension Enrichment Center. Please plan to bring your own snacks, lunch and beverages due to our current COVID guidelines.

Whether helping an athlete, an elderly friend, or just an acquaintance, this training will help you understand how to help others.

## Boone County Cooperative Extension Service



University of Kentucky  
College of Agriculture,  
Food and Environment  
Cooperative Extension Service

P.O. Box 876 • 6028 Camp Ernst Rd.  
Burlington, KY 41005  
PH: 859/586-6101 • FAX: 859/586-6107  
E-mail: boone.ext@uky.edu  
Office Hours: M-F, 8 am-4:30 pm



Disabilities accommodated  
with prior notification.

# Apply to drive with TANK

## What makes TANK stand out from other employers?

At TANK, we want to help you get behind the wheel of a great career. You're not just driving a bus, you're also an integral part of keeping NKY moving, and supporting those who need our services. TANK bus operators receive paid training, competitive pay and benefits, retirement program and a supportive and positive work environment.

## Enjoy a career that is guaranteed to take you places!

TANK bus operator pay begins at \$18.16 per hour for trainees, with raises every year for three years. You'll have a great career as you progress over three years to \$25.90/hour. Many of our bus operators have been a part of the TANK team for over 15 years and counting.

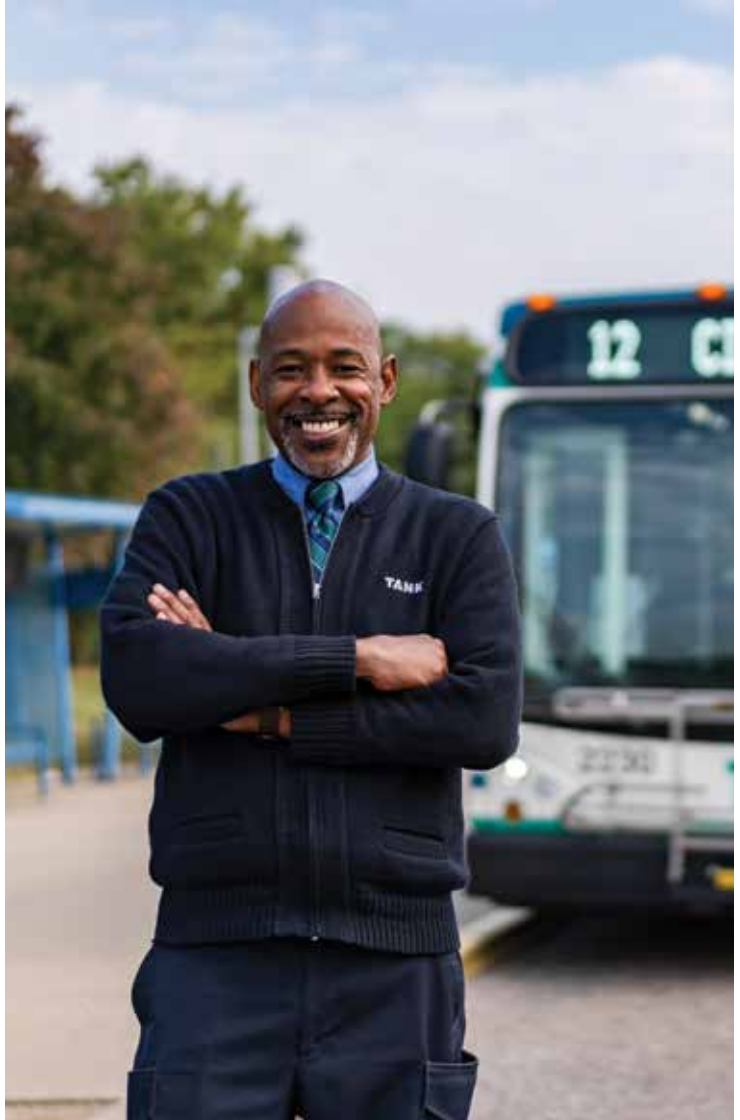


## Do you have to know how to drive a bus to apply for a career at TANK?

TANK offers extensive training to all new hires. CDL Permit or License (Class B with passenger and air brake) is preferred, however applicants do not need a CDL to apply. Qualified applicants will receive fully paid training through the CDL process. Our trainers will walk you through the entire process to ensure you feel comfortable safely operating any of our buses.

## If someone was interested in starting their career at TANK, what should they do?

Applying to drive with TANK is simple. Visit <https://www.tankbus.org/contact-us/careers> to apply online now.




### Transit Authority of Northern Kentucky

**TANK is the public transit authority that provides bus service in Boone, Campbell and Kenton counties and downtown Cincinnati.**

**Contact us!** Phone: 859/331-TANK (8265) • Web: [www.tankbus.org](http://www.tankbus.org)

**Connect with TANK!**



 Facebook TANK (Transit Authority of Northern Kentucky)

 Instagram @tankbus

# Child mental health issues

According to Mental Health America, recognizing and treating mental health problems early may prevent serious issues from arising down the road. Here are some of their warning signs to look for in a child:

- Talks about suicide or death
- Hurts other people or animals; or damages property
- Has major changes in eating or sleeping habits
- Loses interest in friends or things usually enjoyed
- Falls behind in school or earns lower grades

- Feels very sad, hopeless or irritable
- Feels overly anxious or worried
- Is scared and fearful; has frequent nightmares
- Is excessively angry
- Uses alcohol or drugs

If there's a concern that a child is experiencing a mental illness, it's imperative that a parent or guardian seek the help of a medical or mental health professional.

There are many other things parents can do to help a child dealing with mental health issues.

Mental Health America suggests:

- Let your children know that everyone experiences pain, fear, sadness, worry, and anger and that these emotions are a normal part of life, encourage them to talk about their concerns and to express their emotions.
- Be a role model—talk about your own feelings, apologize, don't express anger with violence, and use active problem-solving skills.
- Encourage your children's talents and skills, while also accepting their limitations.

- Celebrate your children's accomplishments.
- Give your children opportunities to learn and grow, including being involved in their school and community and with other caring adults and friends.

Mental health issues are treatable when identified. Early diagnosis can help children live a confident life and grow into independent, empowered adults. For a free mental health screener you can visit: <https://www.mhankyswoh.org/>

## Talking to your teen about drug abuse

Are you struggling to talk to your teen about drug abuse? You're not the only one. When it comes time to have a tough conversation, sometimes the most important thing to do is sit down and listen. As a parent or guardian, there's no shortage of difficult topics to tackle with your teen. However, if you take the wrong approach going into these conversations, you may not have the open dialogue you had hoped for. Not sure where to start? We're here to help.

Here are five tips on how to start the conversation with your teen about drug abuse:

- **Approach from a place of love.** Before the conversation starts, you should approach the conversation as just that — a conversation — not a lecture. Your teen will be more receptive to what you have to say when you let them know you love them. It's important to let them know that you want them to reach their goals and drugs/alcohol can hinder their growth.
- **Ask questions.** Asking open-ended questions will get your teen talking and allow you to listen to

what they are really saying. You may need to reframe your questions as statements to encourage conversation. Instead of "How was your day?" try saying "Tell me about your day today." The first question will most likely result in a one-word answer, whereas the second allows them to reflect on their day and tell you what happened.

- **Prepare to listen.** It's easy to get caught up in a conversation, but then before you know it, you're the only one talking and it turns into a one-sided conversation. Once you ask an open-ended question, just pause. Give your teen a second to think and answer before you jump back in. Try not to talk over them — you want to show your child that they can come to you with any question or concern. Actively listening will establish trust for both sides.
- **Capitalize on smaller moments.** Starting off your conversation with "I know you are abusing drugs, that is a bad thing to do" may not be the best way to establish trust with your teen. Tough conversations don't have

to be a formal affair, with you two sitting down at the kitchen table interview-style. Spark up a conversation in the car, where it's easy to converse with no pressure. It's also easy to look out the window and avoid direct eye contact, which may put your teen at ease.

- **Share your own experiences.** As much as things have changed from when you grew up, the pressures of adolescence have remained similar. Mission Harbor Behavioral Health says "Transparency is important here, but in order for the conversation to be effective, try not to glorify your experience with drugs. If you were a heavy marijuana user throughout high school, share that with your child. However, be honest about your experience. Maybe it made you tired all the time, and as a result, your schoolwork suffered or you had to quit a sports team."

It's never too late to start a conversation with your teen about drug abuse. Use one or more of these tips to open the lines of communication.

## Boone Co. Alliance



### About Boone County Alliance

Since 2010, BCA has devoted its energy to develop and implement individual and community strategies to combat the local substance abuse dilemma. In order to achieve its mission of a united community where all youth are drug free, BCA engages in activities related to prevention, advocacy, and collaboration. BCA focuses on prevention of underage drinking, marijuana use, and prescription drug misuse/abuse.

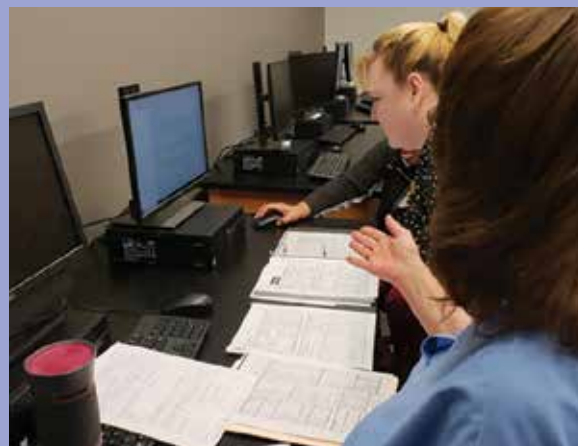
Please visit us at [boonecountyalliance.com](http://boonecountyalliance.com) or call 859.431.1077 ext 111 for more information

# Brighton Center's Center for Employment Training

At Brighton Center's Center for Employment Training (CET) we provide real training that is life changing. We partner with our trainees to build their skills for our region's most in-demand healthcare careers that pay a livable wage, with endless opportunities for advancement. CET is accredited by the Council on Occupational Education and offers accelerated, hands-on training in two skill divisions: Medical Assisting and Health Technology Administration. At CET, trainees learn in-demand skills for the healthcare field and have access to work supports, career coaching, and financial education. Programs at CET are self-paced, taking approximately 6 to 9 months to complete. CET utilizes grants, scholarships, and federal funding to provide eligible trainees a completely debt-free education.



*Brighton Center's Center for Employment Training offers innovative, short-term workforce training programs in Medical Assisting and Health Technology Administration.*



## Medical Assisting

Our Medical Assisting program prepares trainees for a career as a Medical Assistant in the growing and fast-paced healthcare industry. Trainees earn a CET credential and the ability to sit for the Registered Medical Assistant exam. Our program is 1,070 clock hours and can be completed in as soon as 33 weeks. All of our Medical Assistant trainees complete their training with 160-hour externship with area employers where they gain valuable workplace experiences.

## Health Technology Administration

Health Technology Administration (HTA) trains individuals for a variety of front office, back office, and administrative careers in the healthcare industry. In

1,000 clock hours trainees will gain skills in Electronic Medical Records, Medical Billing and Coding, and Medical Terminology, to name a few. Our HTA program can be completed in 31 weeks and our graduates have been placed in physician offices, insurance companies, hospitals, and laboratory settings. The possibilities are endless!

## Admissions

Interested in learning more about how to gain an in-demand credential in the healthcare field through debt-free education? Contact us today! Email: [Admissions@brightoncenter.com](mailto:Admissions@brightoncenter.com), Phone: 859/491-8303 ext. 2201, or visit our website at [www.bccet.edu](http://www.bccet.edu). Follow us on Facebook and Instagram!

## Brighton Center CET



601 Washington Ave., Suite #140,  
Newport, KY 41071

PH: 859/491-8303, ext. 2201

Email: [Admissions@brightoncenter.com](mailto:Admissions@brightoncenter.com)



### FOLLOW US!

 [Facebook.com/bccet.edu](https://www.facebook.com/bccet.edu)

 [Instagram.com/cet\\_nky](https://www.instagram.com/cet_nky)

©2021 All rights reserved. Reproduction in whole or in part without permission is prohibited. WHAT'S HAPPENING!™ is published by Rivertown Communications, www.whatshappeningnews.com. Although all information is believed to be reliable, Rivertown Communications cannot guarantee the accuracy of information presented in this publication. All articles are submitted and approved by participating organizations and do not necessarily represent the views or opinions of the publisher.

Visit [www.whatshappeningnews.com](http://www.whatshappeningnews.com) for all the news in Boone, Kenton, Campbell and Oldham counties

## Boone County Conservation District

# Focused conservation project in Middle Creek Watershed

*The Boone County Conservation District (BCCDKY) works to protect and conserve the beautiful forests, fields, and streams of our community. We provide technical, financial, and educational assistance to residents, landowners, businesses, and public agencies to promote the wise use and protection of natural resources for future generations.*

### Focused conservation project in Middle Creek Watershed

Landowners within the Middle Creek Watershed are eligible for funding to support conservation projects on their land.

BCCDKY has partnered with Natural Resource Conservation Service (NRCS) to protect forest habitat in the Middle Creek Watershed. Landowners within this watershed are now eligible to apply for funding to implement conservation projects on their property. Examples of projects include removing invasive species, stabilizing stream banks, building livestock fences, planting pollinator gardens, and more.

Landowners are encouraged to contact BCCDKY's office for an application. Then, staff from the NRCS



will work with landowners through the planning process. Landowners will be reimbursed for their projects through the Environmental Quality Incentives Program (EQIP).

This Focused Conservation Project will help protect over 7,000 acres of forest habitat in Boone County, which has one of the fastest-growing economies in the state. Protection of the Middle Creek Watershed, which includes popular public nature parks such as Middle Creek Park, Conservancy Park, Boone Cliffs Nature Preserve, and Dinsmore Woods Na-

ture Preserve, will help preserve the health of our streams, rivers, forests, air, and wildlife resources.

For more information on this project or to download an application, visit [bccdky.org/focused-conservation-project/](http://bccdky.org/focused-conservation-project/).

### Boone County Ohio River Initiative Receives Support from the National Park Service

The Boone County Ohio River Initiative (BCORI) has recently been chosen as one of fourteen communities across the country to receive technical assistance from the National Park Service through the Rivers, Trails, and Conservation Assistance program.

BCORI is a collaborative group of partners from Boone County and surrounding areas hoping to improve access to the river itself and highlight the county's natural and cultural assets while preserving them for future generations. The project goal is to develop a conservation and recreation plan that recognizes the importance of land conservation while also identifying best strategies for river access sites and potential land and water outdoor recreation opportunities.

### Boone County Conservation District

859/586-7903 • [info@bccdky.org](mailto:info@bccdky.org)  
6028 Camp Ernst Road • Burlington, KY 41005

Follow us!



@bccdky